

WPS-2006 Series Lite Industrial Ethernet Switch



Features

- **IEEE 802.3at PoE/PSE**
Support IEEE 802.3at PoE feature to feed power to remote device and facilitate the deployment in the power unreachable application.
- **Power redundancy over DC input by terminal block**
Support power redundancy over DC input to keep the healthy network connection without power outage risk for general industrial application.
- **DIN RAIL/Wall mounting installation type**
Support both DIN RAIL and wall mounting type to facilitate the installation flexibility for general industrial application.
- **Operating temperature -20℃ ~ 60℃**
Device supports extended operating temperature to guarantee the reliability and stability in the critical environmental condition with affordable cost.

Target Applications

- Fiber Ethernet network connection for long distance as well as PoE/PSE enabled equipment which requires reliable and stable link under critical environmental condition of general industrial application.

5 Ports 10/100Base-TX and 1 Port 100Base-FX
Fast Ethernet Switch with Built-in IEEE802.3at
PoE/PSE Feature and Extended Operating Temperature

Description

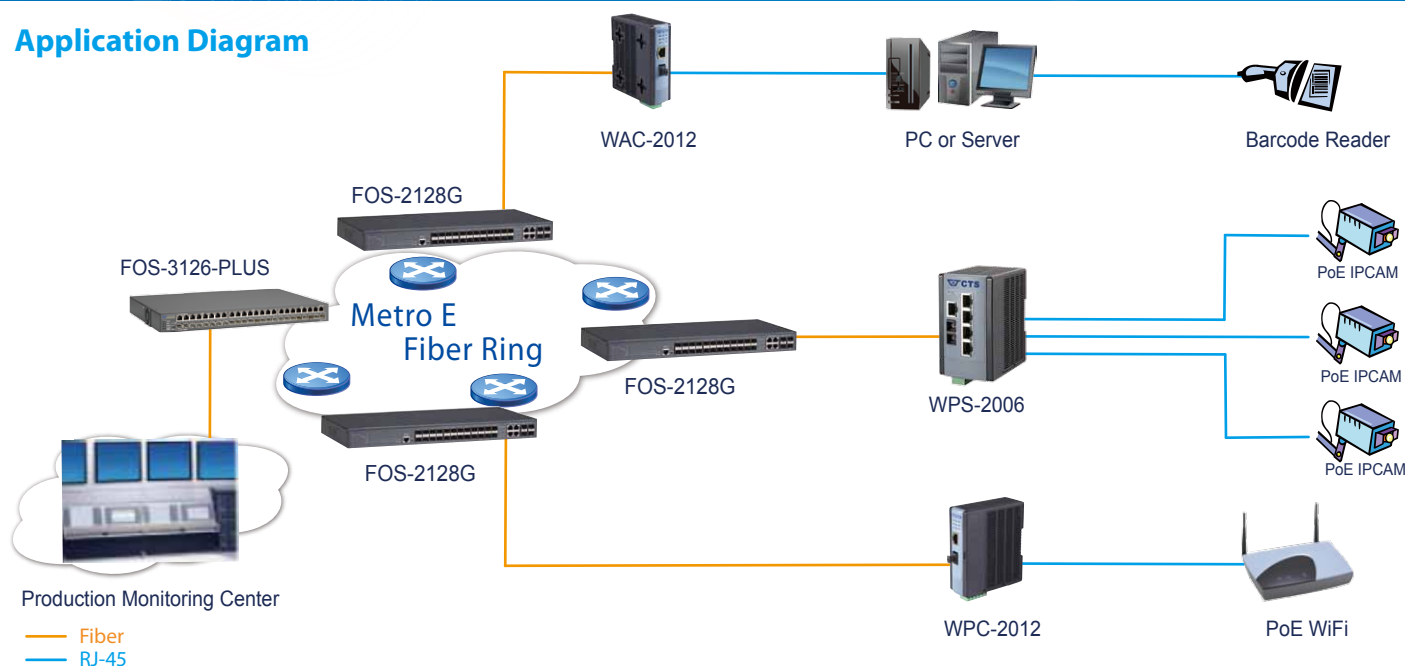
Connection Technology Systems (CTS) WPS-2006 series are 5 ports Fast Ethernet 10/100Base-TX with 100Base-FX Ethernet switch. The WPS-2006 series Ethernet switch converts traditional twisted-pair RJ-45 cable into various fiber media including multi-mode, single-mode, SC connector, bi-directional WDM, or a SFP slot for pluggable fiber transceiver. The traditional transmission distance of 100m over RJ-45 copper can be extended from 2km to 120km over fiber.

WPS-2006 series Ethernet switch adopts the brand new ID appearance as well as the well considered designs for the demand of different customer segments. The extended operating temperature of WPS-2006 Ethernet switch is from -20 ℃ to 60 ℃ which enables users to install the equipment under critical environment without reliable and stable concerns. It is especially designed for network operators, metro Ethernet providers, enterprise, SMB customer segment, who have the need of implementing fiber optical Ethernet networks over long distance for point-to-point fiber connection with the demand of wide operating temperature, and are looking for an effortless and robust fast Ethernet switch.

WPS-2006 series Ethernet switch is equipped with fully compliant with IEEE 802.3, 802.3u standards. Besides, the user can connect another switch or NIC through the 10/100Base-TX twisted-pair RJ-45 port of WPS-2006 series Ethernet switch without crossover cables needed and monitor the status through comprehensive LED display.

WPS-2006 series Ethernet switch has built in PoE/PSE feature which complies to IEEE802.3at standard. With PoE/PSE enabled feature, WPS-2006 can significantly solve the installation obstacle for the user in the power unreachable situation. It can actively feed power to the remote equipment which cannot have the power source available and simply facilitate the user applications to be deployed smoothly.

Application Diagram



Specification

Interface

TP Port
 Shielded 10/100Base-TX RJ-45 x 1
 Shielded 10/100Base-TX PoE RJ-45 x 4
 F/O Port
 100Base-FX x 1

Standards

IEEE 802.3 10Base-T
 IEEE 802.3u 100Base-TX
 IEEE 802.3x Flow Control
 IEEE 802.3at PoE/PSE

H/W Specification

Auto-Negotiation in TX port
 MDI/MDIX Auto-Crossover supported
 Support Full/Half duplex mode operation
 2K MAC Address Table
 80K Bytes Memory Buffer

LED

PWR, PWT1, PWT2, F/O Link/ACT,
 PWR/Port Status, Link/ACT/Speed, PoE

Ethernet Features

Support Flow Control
 Store and Forward Switching Mechanism

Installation Type

Wall Mounting
 DIN Rail Mounting

Power Requirement

DC Input:
 DC Power Jack x 1
 Terminal Block x 2
 Input Voltage: 48VDC

Environmental Condition

Operation: -20℃ ~ 60℃
 Storage Temperature: -20℃ ~ 70℃
 Humidity: 5% ~ 90% , non-condensing

Dimension & Weight

Size: 105 x 93 x 61mm (WxDxH)
 Shipping Weight: 0.4kg

EMC/Safety

FCC Part 15 Class A, CE
 * For further reports, please contact us for update

Order Information

MODEL	FIBER PORT					TP PORT	
	Speed	Fiber Type	Connector	Distance	Ports	Speed	Ports
WPS-2006FC	100	MM	SC	2 KM	1	10/100	5
WPS-2006FT	100	MM	ST	2 KM	1	10/100	5
WPS-2006FC (SM-30/50/80/100)	100	SM	SC	30/50/80/100KM	1	10/100	5
WPS-2006W2A(SM-20/40)	100	WDM	SC	20/40KM	1	10/100	5
WPS-2006W2B(SM-20/40)	100	WDM	SC	20/40KM	1	10/100	5
WPS-2006SFP	100	SFP	-	-	1	10/100	5

OPTIONAL POWER ADAPTOR ACCESSORY FOR WPS SERIES PRODUCTS

WAP-PW-48D240	48V/240W DIN RAIL POWER SUPPLY FOR WAC/WPC/WAS/WPS SERIES PRODUCTS	Working TEMP. range:0℃~50℃
---------------	--	----------------------------