

## Quick Installation Guide

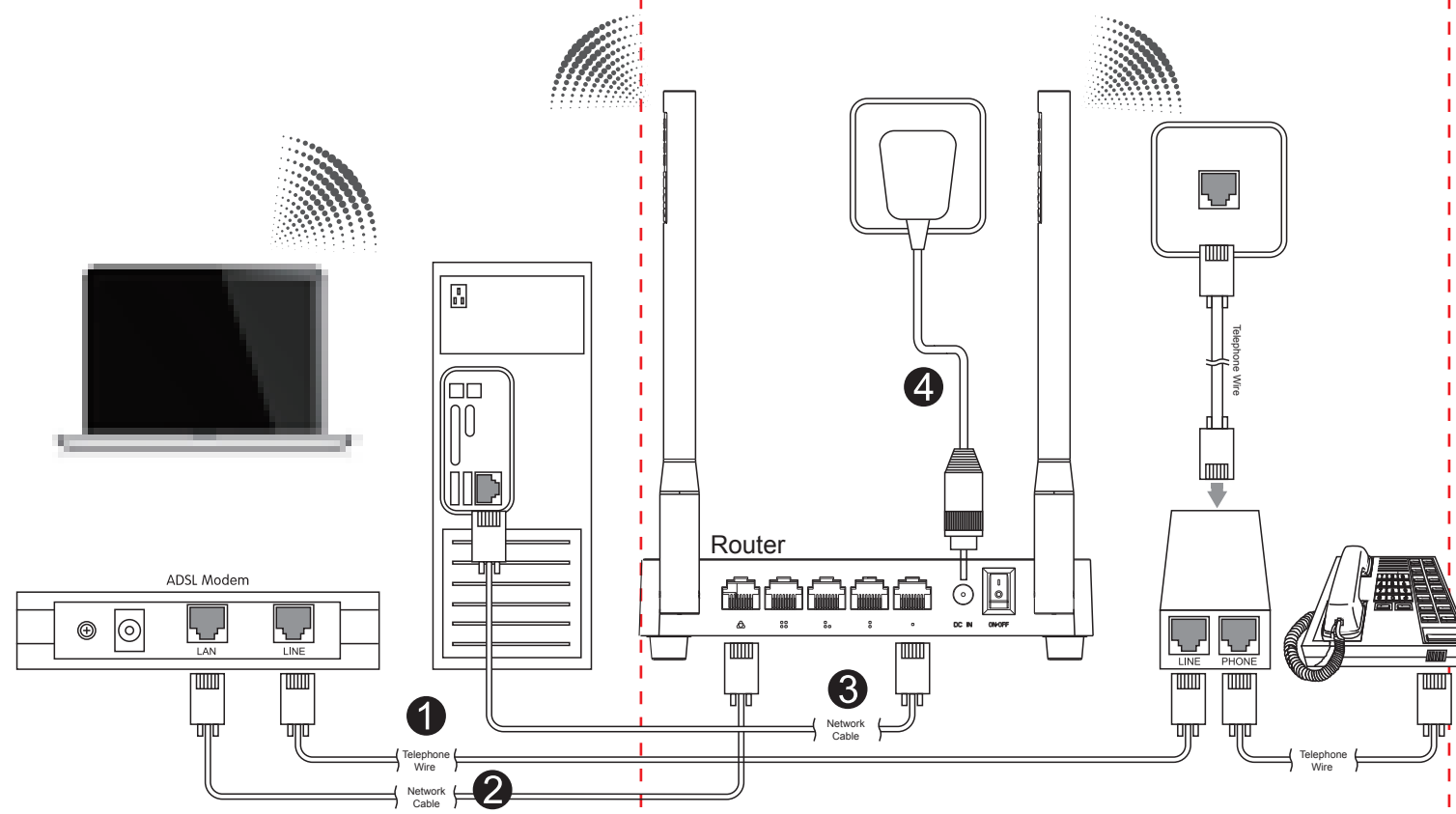
### Wireless-N Broadband Router

Model NO.: N200RE

Copyrights 2013 by TOTOLINK All rights reserved. Website: <http://www.totolink.net>  
Information in this document is subject to change without prior notice.

# 1 Hardware Installation

If you access Internet by ADSL, please comply with step 1, 2, 3 and 4 in below diagram in correct order; if you access Internet by residential broadband, please comply with step 2, 3 and 4 to connect the WAN port of your router with the residential broadband directly.



After connected, please check whether the indicator lights are normal.

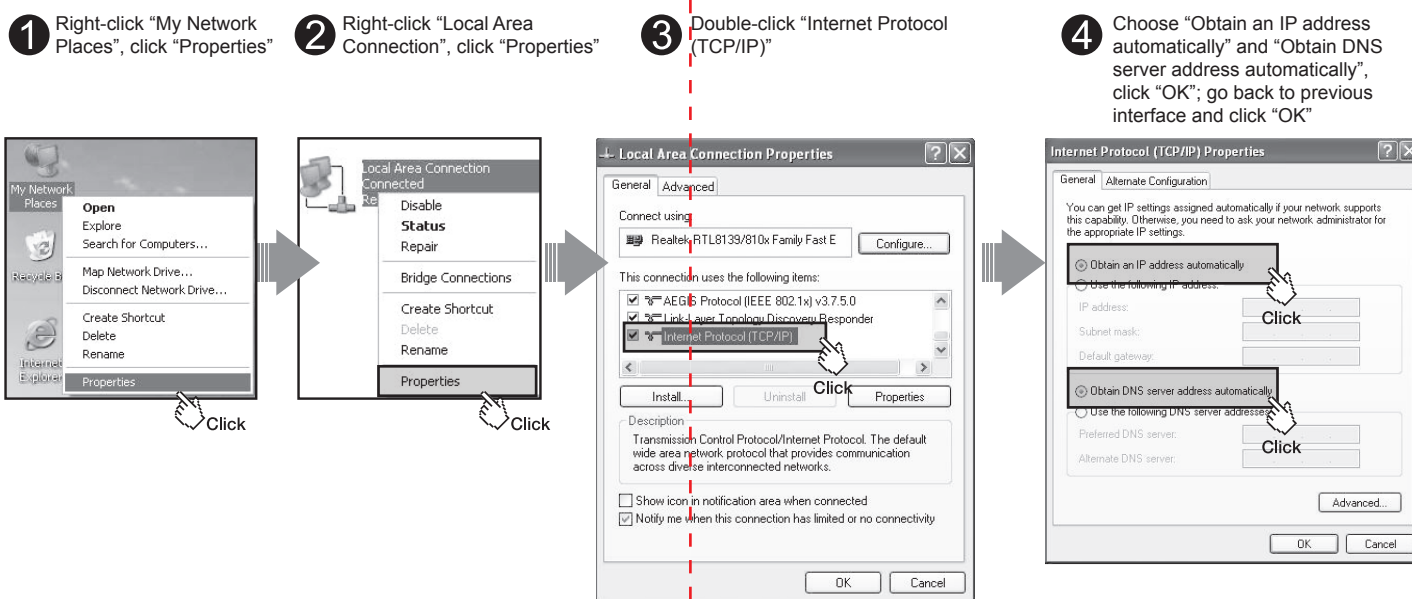
Name	Normal Status
POWER	This indicator lights blue when the router powered on, otherwise it is off.
CPU	This indicator blinks blue when router powered on.
WLAN	This indicator blinks blue when there are wireless devices connected and transmitting data to the router.
WAN	On: When the WAN port is connected successfully the indicator lights blue. Blink: During transmitting or receiving data through the WAN port the indicator blinks blue. Off: There is no device linked to the WAN port.
1/2/3/4 LAN	On: When the LAN port has a successful connection, the corresponding indicator lights blue. Blink: During transmitting or receiving data through the LAN port the corresponding indicator blinks blue. Off: There is no device linked to the LAN port.

### NOTE:

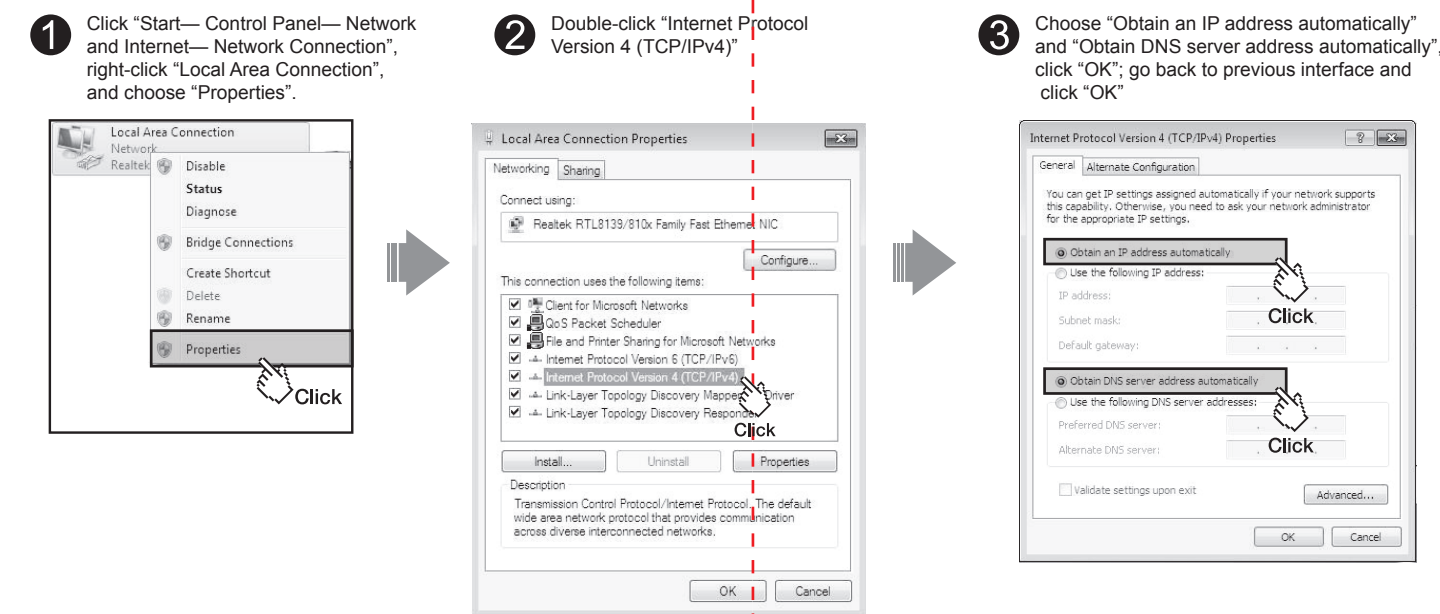
1. Please disconnect the power adapter and all cables during thunderstorm weather;
2. Keep away from heat source and keep well ventilated;
3. Please pay attention to the waterproofing and moisture-proof when storing, transporting and running;
4. The power supply must reach the rated current and power;
5. Put the router in flat places.

## 2 Set Up PC

Windows 2000/XP For Windows 2000 or Windows XP Operating System, please comply with following steps to set up.

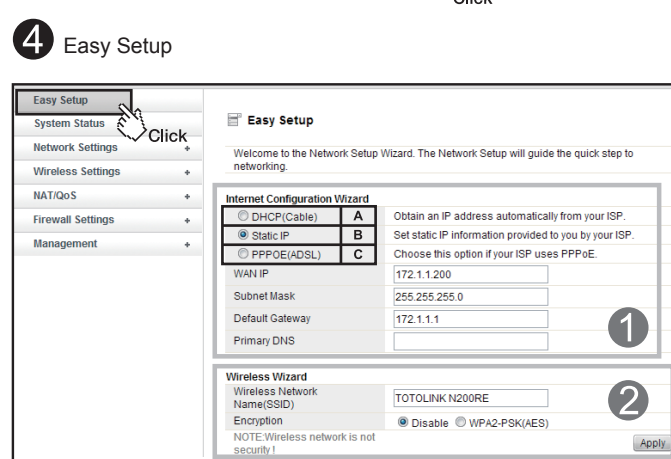
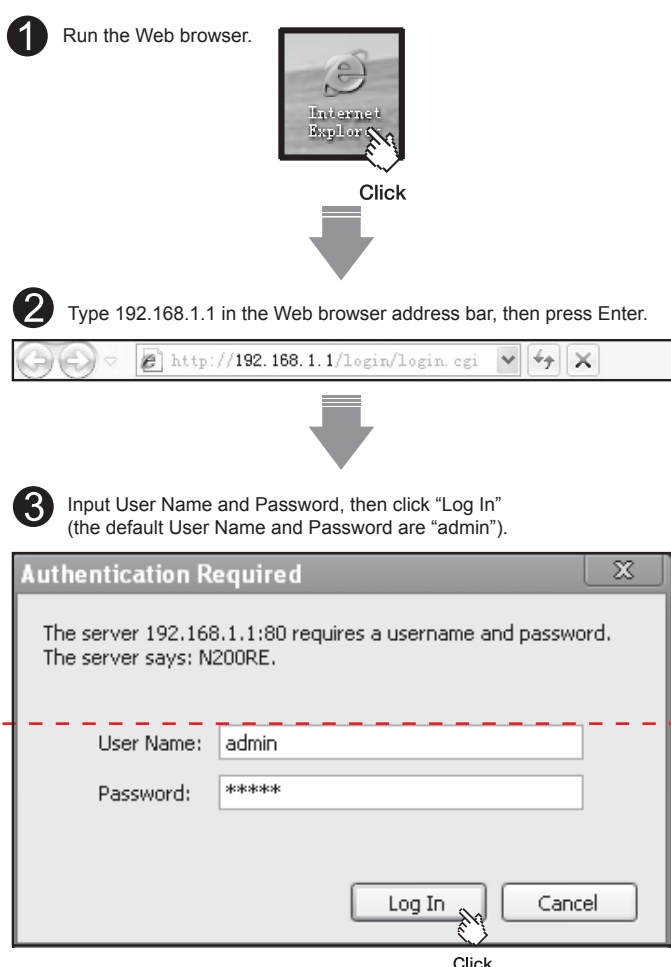


Windows Vista/7 For Windows Vista or Windows 7 Operating System, please comply with following steps to set up.



## 3 Set Up Router

Please set up the router following below steps.



Internet Configuration Wizard	
Internet Access Mode	Parameters that provided by ISP (Service Provider)
A DHCP(Cable)	ISPs do not provide any parameters, you can access Internet without router, no need set up the PC
B Static IP	Fixed IP address, Subnet mask, Default gateway and DNS server
C PPPoE	User name & Password

**A DHCP(Cable)**

Internet Configuration Wizard

☐ DHCP(Cable) Obtain an IP address automatically from your ISP.

☐ Static IP Set static IP information provided to you by your ISP.

☐ PPPoE(ADSL) Choose this option if your ISP uses PPPoE.

**B Static IP**

Internet Configuration Wizard

☐ DHCP(Cable) Obtain an IP address automatically from your ISP.

☐ Static IP Set static IP information provided to you by your ISP.

☐ PPPoE(ADSL) Choose this option if your ISP uses PPPoE.

WAN IP: 172.1.1.200

Subnet Mask: 255.255.255.0

Default Gateway: 172.1.1.1

Primary DNS:

**C PPPoE(ADSL)**

Internet Configuration Wizard

☐ DHCP(Cable) Obtain an IP address automatically from your ISP.

☐ Static IP Set static IP information provided to you by your ISP.

☐ PPPoE(ADSL) Choose this option if your ISP uses PPPoE.

User Name:

Password:

**2 Wireless Wizard**

Wireless Wizard

Wireless Network Name(SSID): TOTOLINK N200RE

Encryption: ☒ Disable ☐ WPA2-PSK(AES)

NOTE: Wireless network is not security!

**NOTE:**

After you set the Pass Phrase, please remember your Network Name (SSID) and the Pass Phrase to connect with your wireless LAN.

Press and hold RST/WPS button for about less than 5 seconds and the CPU LED indicator changes its lighting, it is WPS working. If more than 5 seconds and the CPU LED not response, the router will reboot to default factory settings.

## 4 Wireless Network Connection

