

TOTO LINK

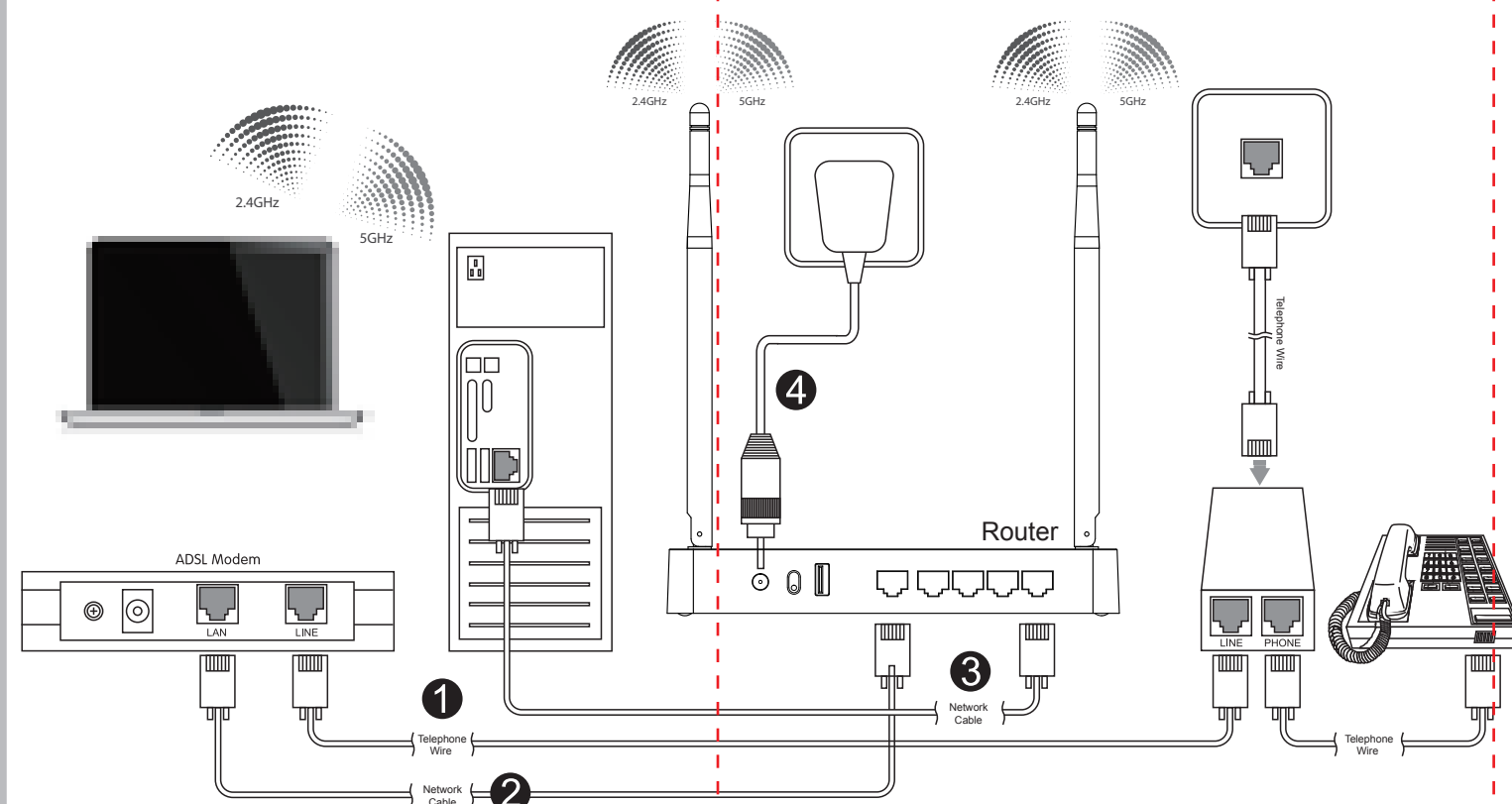
Quick Installation Guide

AC1200 Wireless Dual Band Gigabit Router

Copyrights 2013 by TOTOLINK All rights reserved. Website: <http://www.totolink.net>
Information in this document is subject to change without prior notice.

1 Hardware Installation

If you access Internet by ADSL, please comply with step 1, 2, 3 and 4 in below diagram in correct order; if you access Internet by residential broadband, please comply with step 2, 3 and 4 to connect the WAN port of your router with the residential broadband directly.



After connected, please check whether the LED indicators are normal.

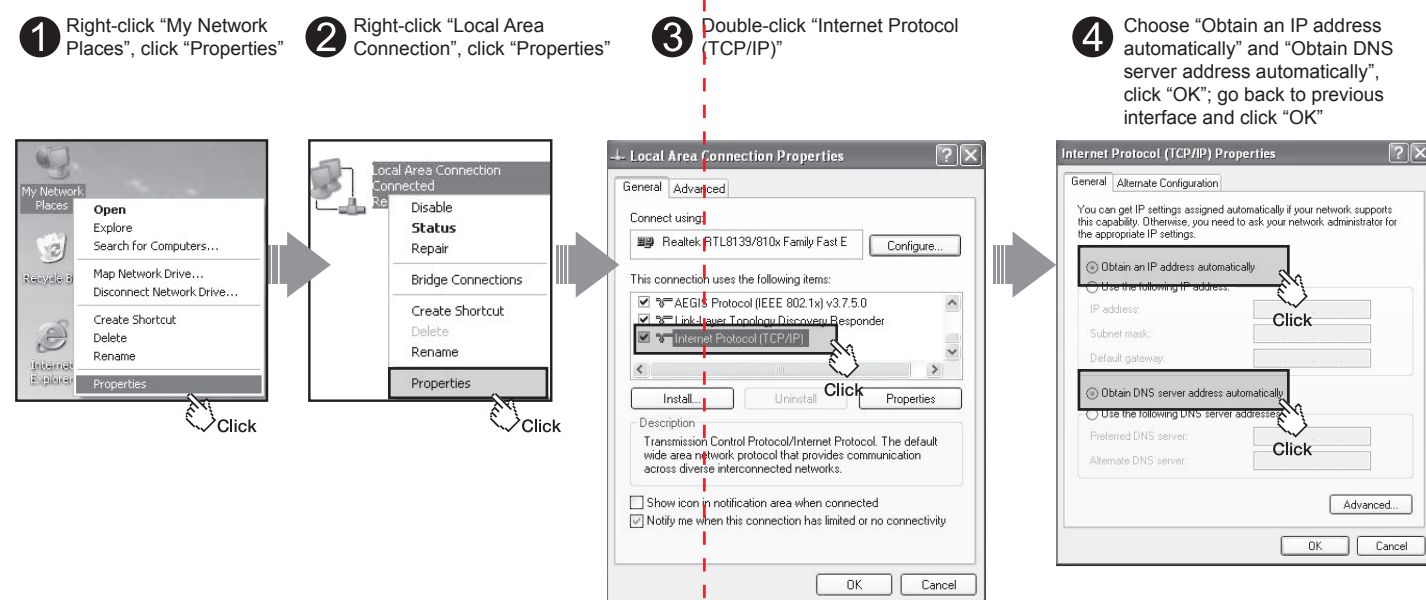
Name	Description
Power	This indicator lights blue while the router receiving power, otherwise it is off.
CPU	This indicator keeps blinking blue after the router powered on.
2.4G	This indicator lights blue when the router's 2.4G wireless enabled.
5G	This indicator lights blue when the router's 2.4G wireless enabled.
WAN	When the WAN port is connected successfully the indicator lights blue.
1/2/3/4 LAN	When one of the LAN ports has a successful connection, the corresponding indicator lights blue.
LAN	While transmitting or receiving data through the LAN port the indicator blinks blue.
USB	This indicator lights blue when you have plugged a USB device on the router.

NOTE:

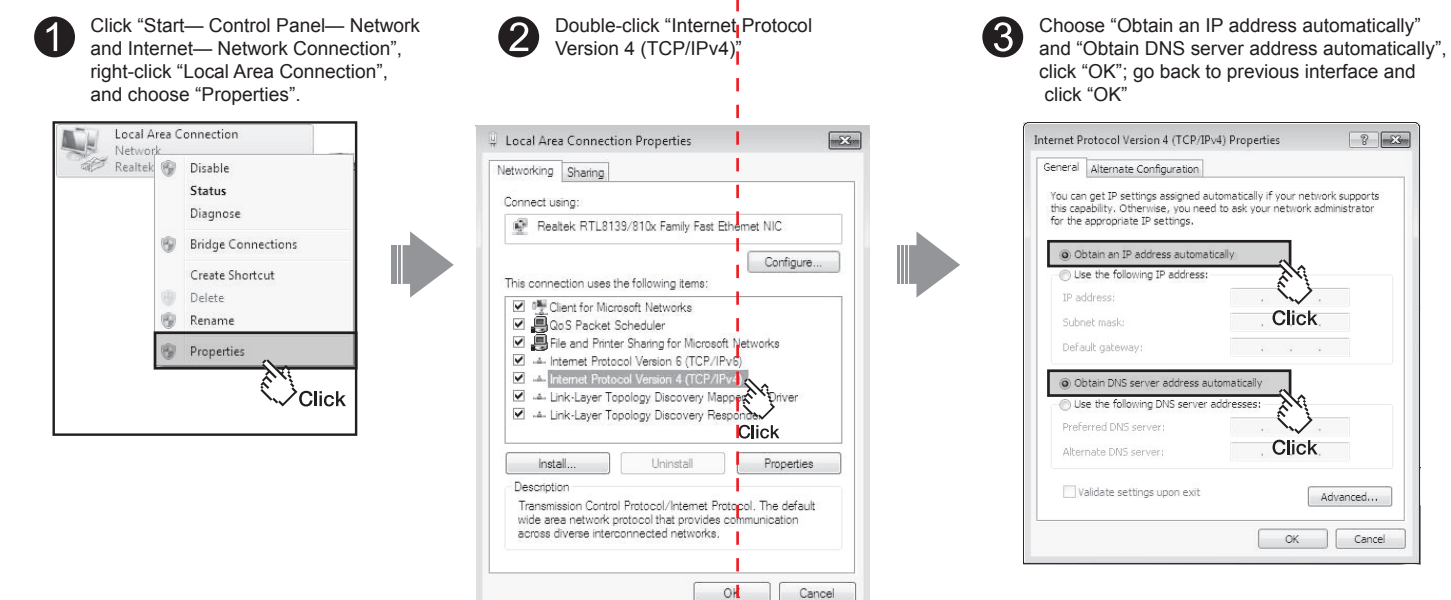
1. Please disconnect the power adapter and all cables during thunderstorm weather.
2. Keep away from heat source and keep well ventilated.
3. Please pay attention to the waterproofing and moisture-proof when storing, transporting and running.
4. The power supply must reach the rated current and power.
5. Put the router in flat places.

2 Set Up PC

Windows 2000/XP For Windows 2000 or Windows XP Operating System, please comply with following steps to set up.

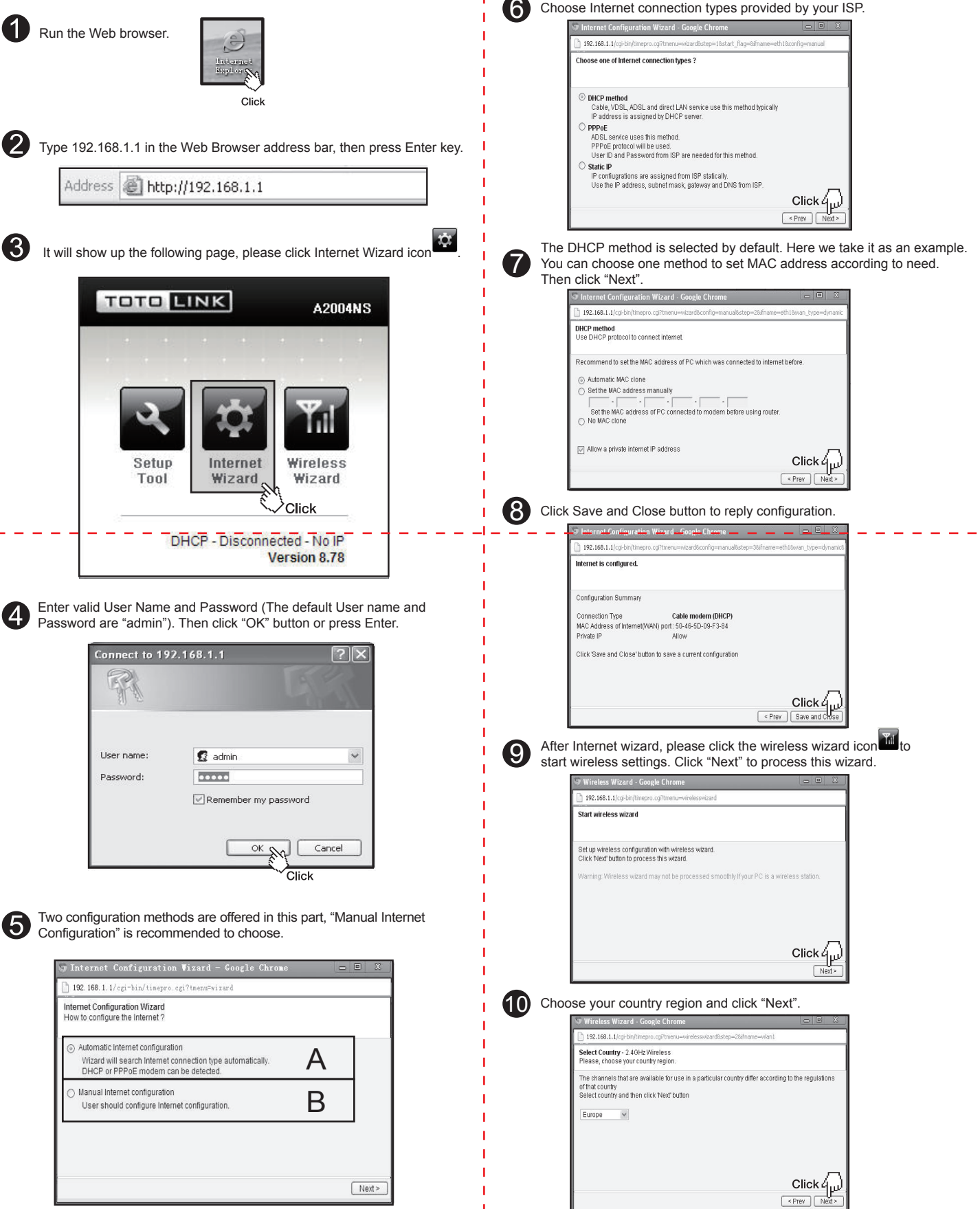


Windows Vista/7 For Windows Vista or Windows 7 Operating System, please comply with following steps to set up.

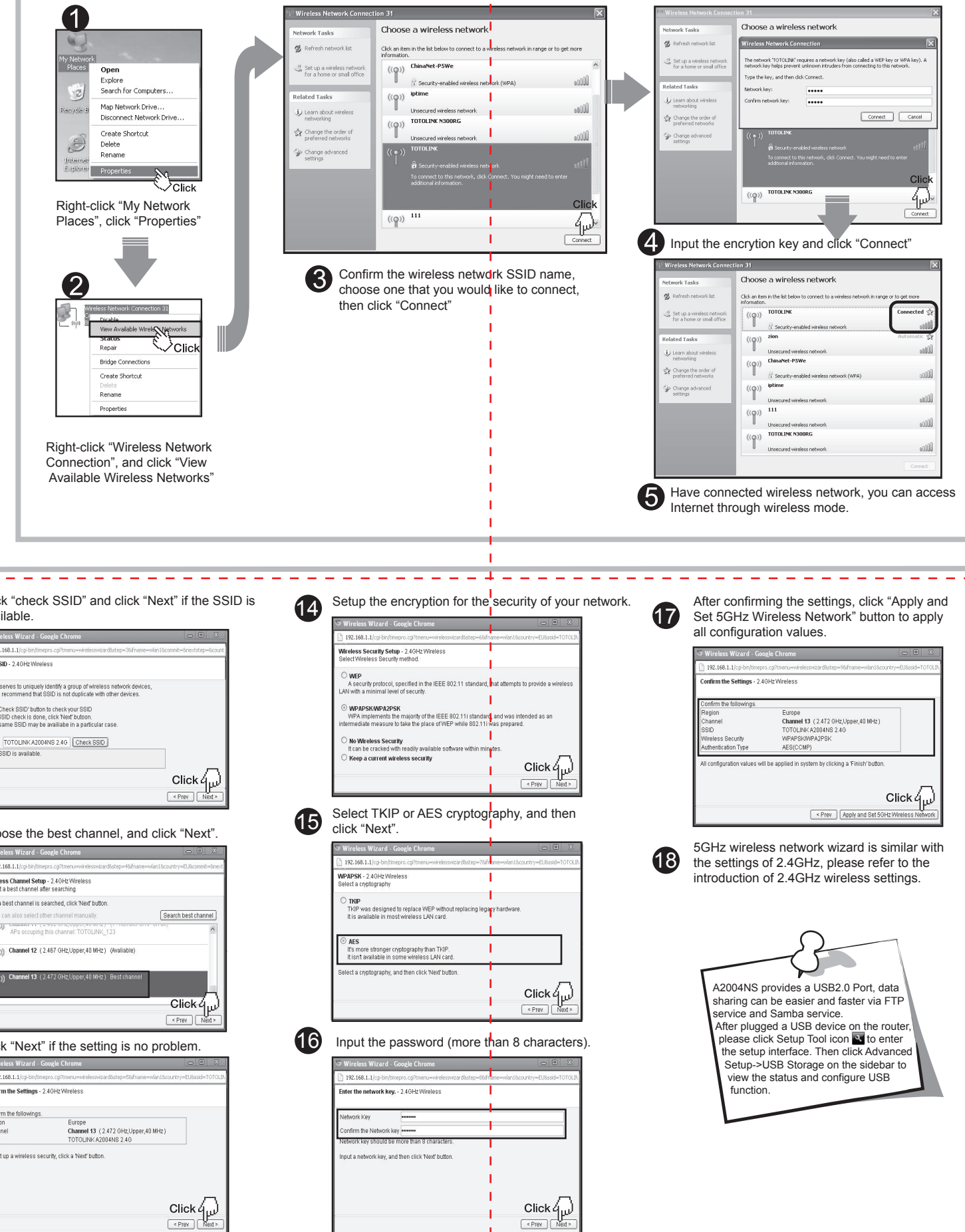


3 Set Up Router

Please set up the router following below steps.



4 Wireless Network Connection



A2004NS provides a USB2.0 Port, data sharing can be easier and faster via FTP service and Samba service.
After plugged a USB device on the router, please click Setup Tool icon to enter the setup interface. Then click Advanced Setup->USB Storage on the sidebar to view the status and configure USB function.