



# **Disk Station DS710+**

## **Quick Installation Guide**

DS710+12042009

# Table of Contents

<b>3</b>	<b>Chapter 1: Before You Start</b>
3	Package Contents
4	Safety Instructions
<b>5</b>	<b>Chapter 2: Hardware Setup</b>
5	Tools and Parts for Hard Disk Installation
5	Install Hard Disks
9	Start Up Your DS710+
<b>10</b>	<b>Chapter 3: Install DS710+ Firmware</b>
10	Install from Windows
12	Install from Mac OS X
14	Install from Linux
17	Learn More

# Before You Start

Before you start setting up DS710+, please check the package contents to verify that you have received the items below. Please also read the safety instructions carefully before use to prevent your DS710+ from any damages.

## Package Contents

**Main Unit x 1**



**AC Power Cord x 1**



**Power Adapter x 1**



**2M RJ-45 LAN Cable  
x 1**



**Screws for 2.5" Hard  
Drives x 10**



**Screws for 3.5" Hard  
Drives x 10**



**Installation CD x 1**



## Safety Instructions

---



Keep away from direct sunlight and away from chemicals. Make sure the environment does not experience abrupt changes in temperature or humidity.

---



Keep Synology product upright. Do not lay it down horizontally.

---



Do not place the Synology product close to any liquid.

---



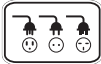
Before cleaning, unplug the power cord first. Wipe Synology product with damp paper towels. Do not use chemical or aerosol cleaners to clean it.

---



Do not place the Synology product on a cart, table, or desk, which is not stable to avoid the product from falling over.

---



The power cord must plug in to the right supply voltage. Make sure that the supplied AC voltage is correct and stable.

---

# Hardware Setup

## Tools and Parts for Hard Disk Installation

- A screwdriver
- At least one 3.5" or 2.5" SATA hard disk  
(Please visit [www.synology.com](http://www.synology.com) for compatible hard disk models.)

**Warning:** If you install a hard disk that contains data, system will format the hard disk and erase all data. If you need the data in the future, please back it up before installation.

## Install Hard Disks

- 1 Slide the Lock switch upward to unlock the handle of one of the hard drive trays.



- 2 Press the lower part of the hard drive tray to pop out the handle.

Press to  
pop out the  
handle.

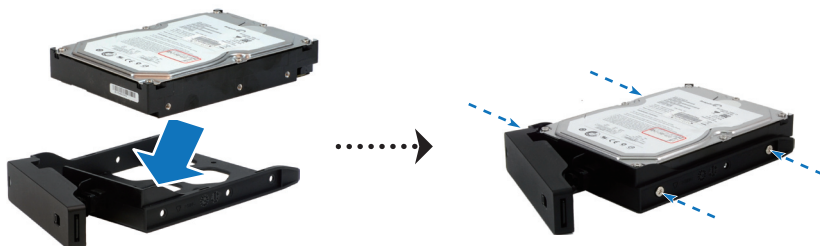


3 Pull the handle to remove the hard drive tray from DS710+.

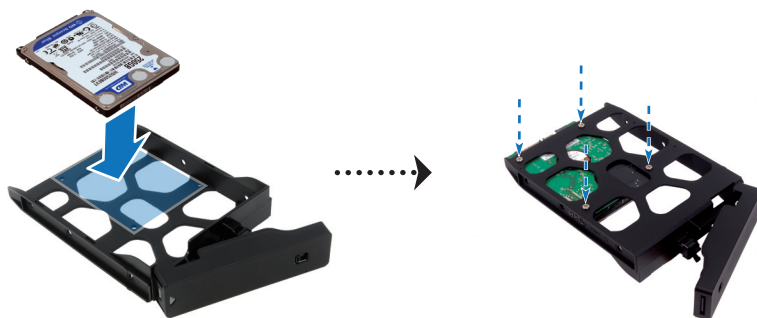


4 Load the hard disk in the hard drive tray.

a **For 3.5" Hard Disk:** Place the hard disk in the hard drive tray, and then tighten the screws to secure the hard disk.



b **For 2.5" Hard Disk:** Place the hard disk in the blue area (shown below) of the hard drive tray, turn the tray upside down, and then tighten the screws to secure the hard disk.



- 5 Insert the loaded hard drive tray into the empty hard disk bay.



**Important:** Make sure the tray is pushed in all the way. Otherwise, the hard disk might not be able to function properly.

- 6 Press the handle in flush with the front panel to hold the hard drive tray in place.
- 7 Slide the Lock switch downward to lock the handle of the hard drive tray.



- 8 Repeat the above steps to install all the other disks on your DS710+.

- 9 The disk position is numbered as shown below (starting from left): HDD1 and HDD2, respectively.



**Note:** If you want to set up a RAID set, it is recommended that all installed hard disks are of the same size to make the best use of hard disk capacity.



## Start Up Your DS710+

- 1 Connect one end of the power cord to the Power port of DS710+, and the other to the power outlet.



- 2 Use the LAN cable to connect DS710+ to your switch/router/hub.



- 3 Push the Power button on the front panel to turn on your DS710+.



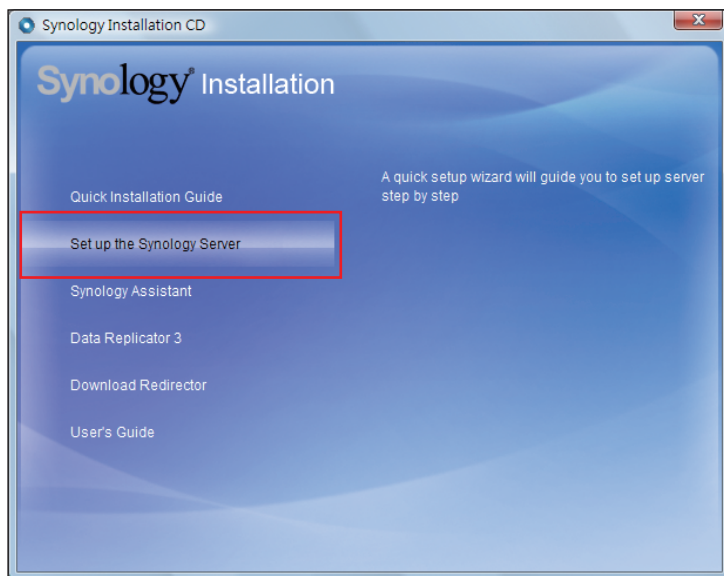
Your DS710+ is now online and detectable from a network computer.

# Install DS710+ Firmware

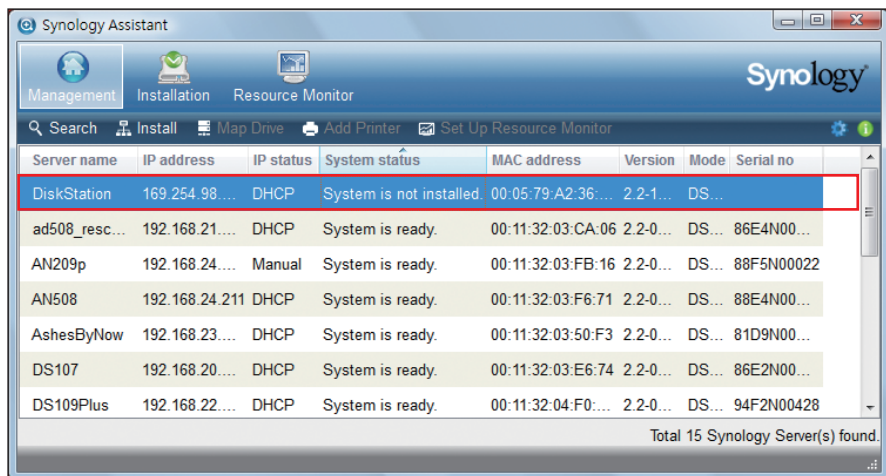
On a network computer, follow the steps in this chapter to install the system firmware for your DS710+. After the firmware is installed, you can manage all features of your DS710+ by logging into the Disk Station Manager with a web browser.

## Install from Windows

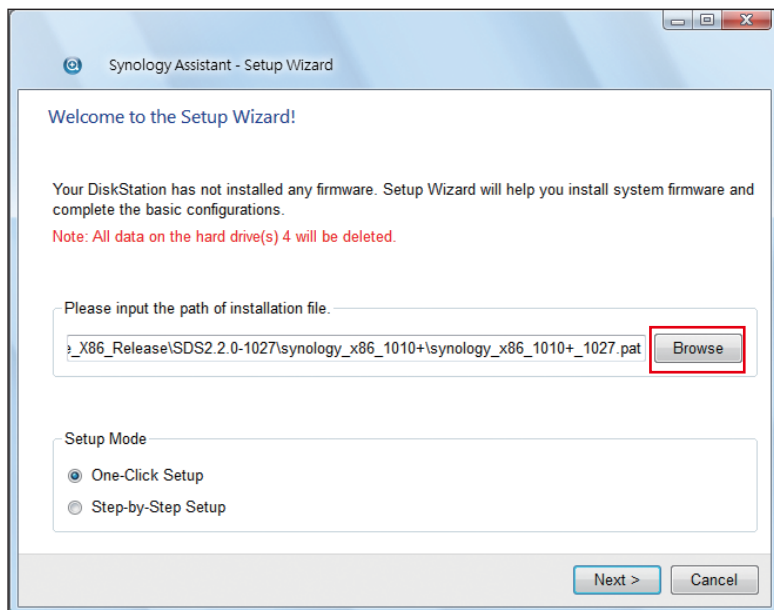
- 1 Insert the installation CD into your computer, and then choose **Set up the Synology Server** from the autorun menu.



- 2 After Synology Assistant opens, double-click your DS710+ from the server list.



- 3 Click **Browse** to select the “.pat” installation file in the installation CD.



- 4 Follow the onscreen instructions to complete the setup process.

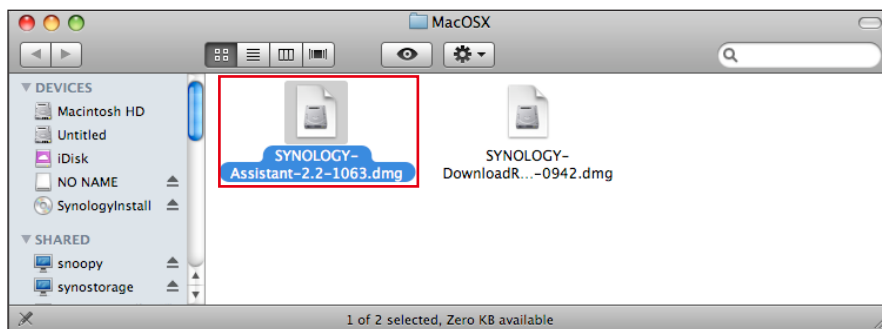
**Note:** If you choose **One-Click Setup**, the default **admin** password for your Disk Station Manager will be blank.

## Install from Mac OS X

- 1 Insert the installation CD into your computer, and then double-click the **SynologyInstall** icon on the desktop.



- 2 In the window that appears, double-click the **MacOSX** folder, and then double-click **Synology Assistant-2.2-[number].dmg**.

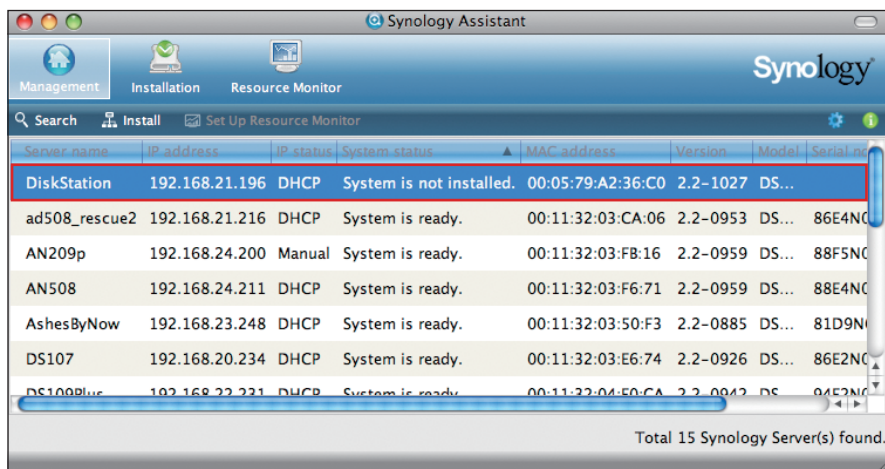


- 3 Double-click the **Synology Assistant.app** in the window that appears.

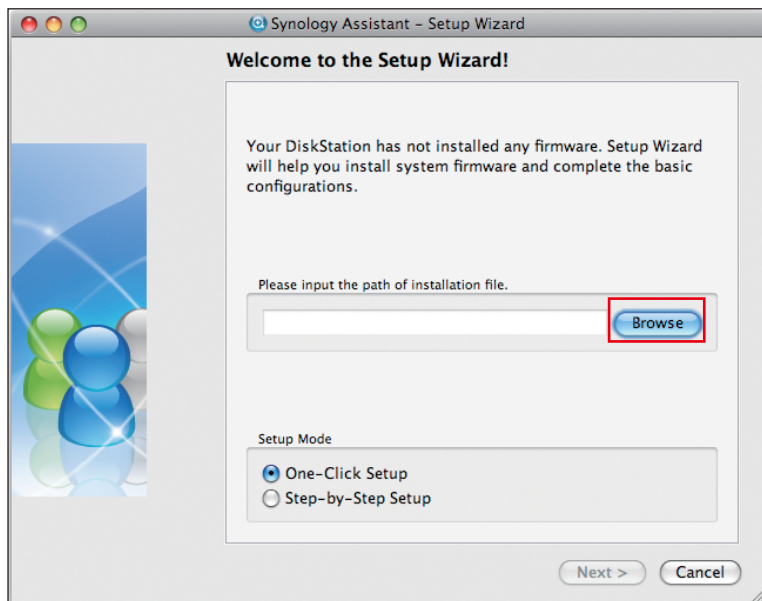


Synology Assistant.app

- 4 After Synology Assistant opens, double-click your DS710+ from the server list.



- 5 Click **Browse** to select the “.pat” installation file in the installation CD.



- 6 Follow the onscreen instructions to complete the setup process.

**Note:** If you choose **One-Click Setup**, the default **admin** password for your Disk Station Manager will be blank.

## Install from Linux

The Linux version is optimized for **Ubuntu** distribution version 8 and 9. You can still try installation on other Linux distributions (for evaluation purpose only).

### Install and Run Synology Assistant

You can install and run Synology Assistant using the command lines or the GUI.

#### If you want to install using the command lines:

Run the script **install.sh** in the **Linux** folder of the installation CD, which will guide you through the steps below.

- 1 Remove the beta version of Synology Assistant (if any).

```
sudo rm -rf /usr/local/Synology /usr/local/bin/SynologyAssistant
```

- 2 Extract **SynologyAssistant-2.2-[number].tar.gz** to the directory you want, such as **“/usr/local”** or **“.”**

```
tar -C ./ -zxvf SynologyAssistant-2.2-[number].tar.gz
```

- 3 If you are using **64bit** Ubuntu, install the 32bit libraries.

```
sudo apt-get install ia32-libs
```

- 4 Create the shortcut to **“/usr/local/bin”**.

```
sudo ln -sf /path/install/SynologyAssistant/SynologyAssistant \  
/usr/local/bin/SynologyAssistant
```

- 5 To run Synology Assistant, you can either use the following command:

```
/path/install/SynologyAssistant/SynologyAssistant
```

Or run the shortcut:

```
/usr/local/bin/SynologyAssistant
```

If **“/usr/local/bin”** exists in your environment variable **\$PATH**, just type:

```
SynologyAssistant
```

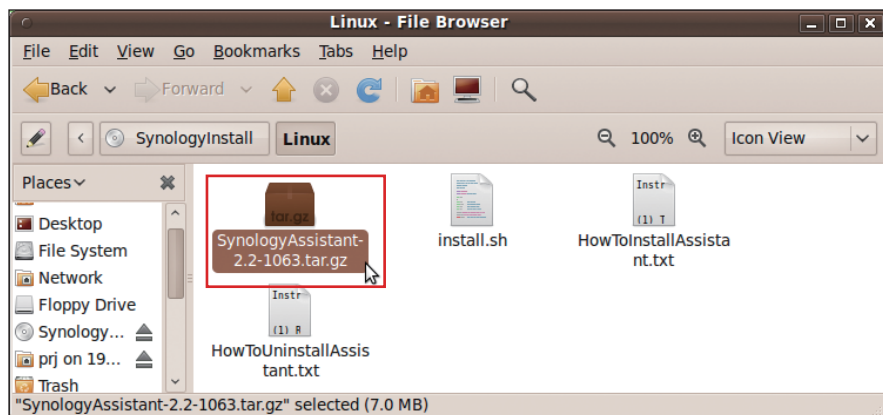
**If you want to install using the GUI:**

- 1 Go to `/usr/local` and `/usr/local/bin` and delete the following folders (if any):  
**Synology, SynologyAssistant**
- 2 Insert the installation CD into your computer, and then double-click the **SynologyInstall** icon on the desktop.

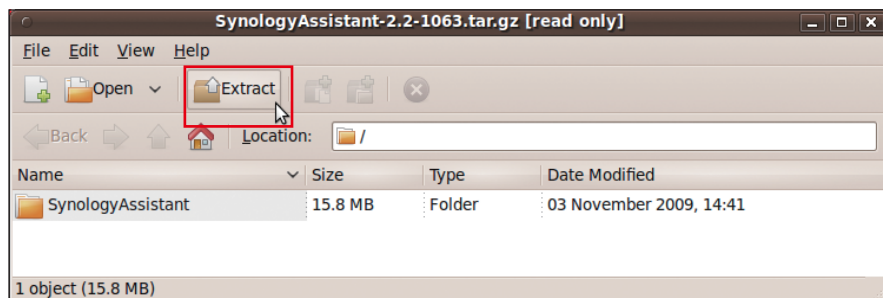


SynologyInstall

- 3 In the File Browser window that appears, double-click the **Linux** folder, and then double-click **Synology Assistant-2.2-[number].tar.gz**.



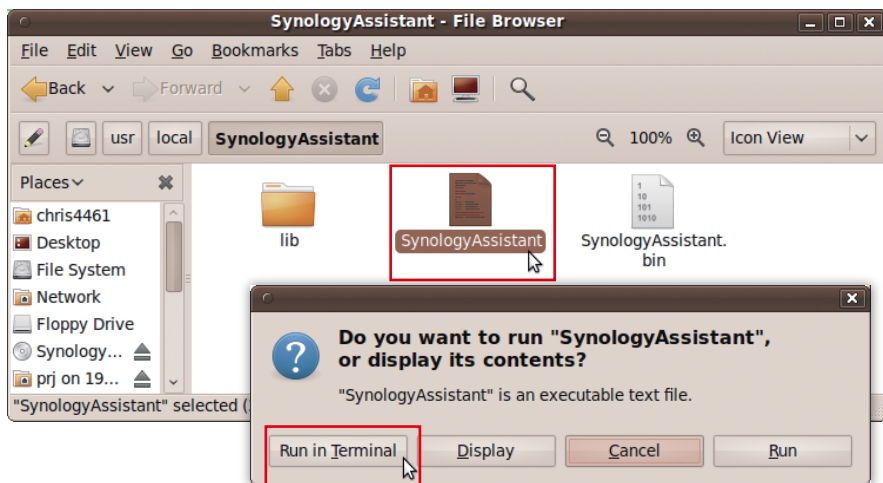
- 4 Click **Extract**, and then extract the **SynologyAssistant** directory to the path `“/usr/local”` or any other path.



**Important:** If you are using **64bit** Ubuntu, you have to install the 32bit libraries before proceeding. To install, type the following command in Terminal:

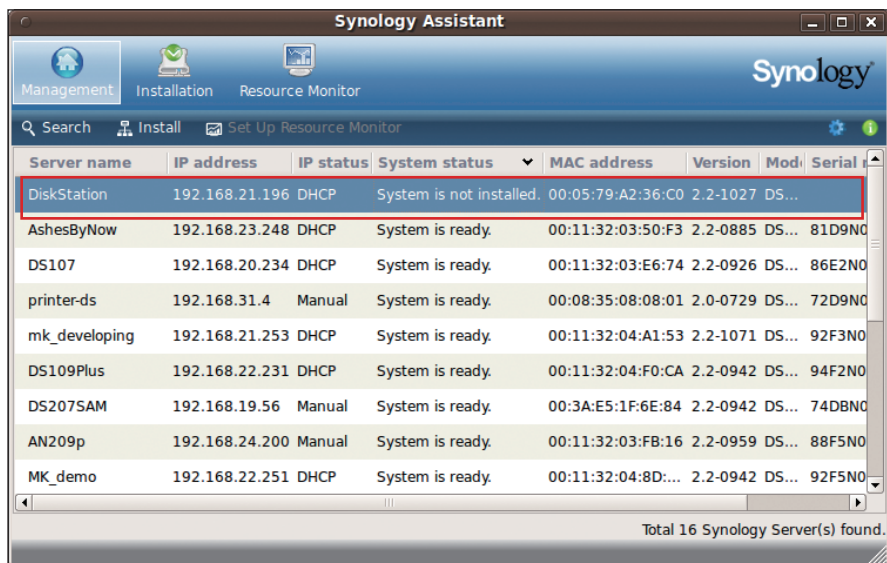
```
sudo apt-get install ia32-libs
```

- 5 Go to the path “/usr/local/SynologyAssistant” (or “ [the path you just specified]/ SynologyAssistant”), double-click **SynologyAssistant**, and then select **Run in Terminal** in the dialog box that appears.



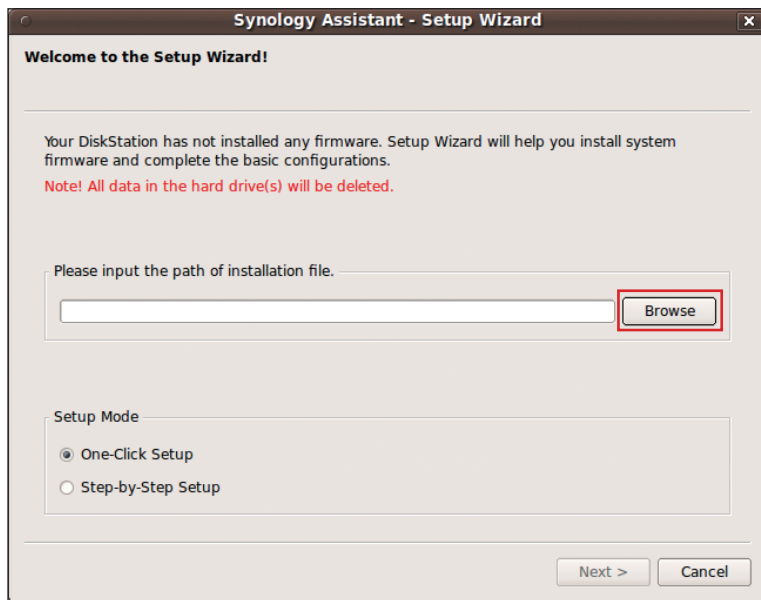
## Install DS710+ Firmware

- 1 After Synology Assistant opens, double-click your DS710+ from the server list.





- 2 Click **Browse** to select the “.pat” installation file in the installation CD.



- 3 Follow the onscreen instructions to complete the setup process.

**Note:** If you choose **One-Click Setup**, the default **admin** password for your Disk Station Manager will be blank.

## Learn More

Congratulations! Your DS710+ is set up now. Refer to the User's Guide in the installation CD for advanced settings and management. For more information or online resources about your DS710+, please visit **[www.synology.com](http://www.synology.com)**.

## **COPYRIGHT NOTICE**

All title, copyright and other intellectual property rights in and to any Synology Products, the “Products” or “Product” (including but not limited to product design and appearance, firmware, and any relevant media, images, photographs, animations, video, audio, music, text, and applets incorporated into the Products), the accompanying manuals and other documents, and on-line or electronic documents, if any, are owned by Synology Inc. Unless otherwise expressly licensed by Synology Inc. in writing, any provision of the Products does not represent any license of any of the above rights.

Copyright © 2004-2010 Synology Inc.; All rights reserved.

## **TRADEMARK NOTICE**

Synology and other names of Synology Products are proprietary marks or registered trademarks of Synology Inc. Microsoft, Windows series, and Internet Explorer are trademarks of Microsoft Corporation. Apple, Mac, Mac OS series are trademarks of Apple Computer, Inc., registered in the U.S. and other countries. Other products and company names mentioned herein are trademarks of their respective holders.

## **LIMITED WARRANTY AND LIABILITY**

Synology provides a limited warranty for its Products only to the initial person or entity that originally purchased the Product from Synology or its authorized distributor or retailer. Synology warrants that every hardware portion of the Products will be free from physical defects in material and workmanship within warranty period, or the Product will be repaired or replaced as determined solely by Synology. The DS1010+, DS710+, DS509+, DS508, RS409RP+, RS409+, RS409, RS408-RP, RS408, RS407, DX510, DX5 and RX4 have three years warranty from the purchase date. All other models purchased before 2008/2/29 have one year warranty, and those purchased after 2008/3/1 have two years warranty from the purchase date. If the Product proves defective during this warranty period, you can contact the local dealer in order to obtain assistance. You must provide proof of purchase and a bar code number from the Product's packaging when asking for assistance. Synology Products are barebones devices so Synology makes no warranty of the hard disk installed, nor warranty on compatibility of all hard disks.

SYNOLOGY SHALL HAVE NO LIABILITY TO YOU UNDER THIS LIMITED WARRANTY IF THE PRODUCT IS INSTALLED AND USED IN A MANNER NOT SPECIFIED OR DESCRIBED IN THE PRODUCT SPECIFICATIONS OR DESCRIPTION, THE PRODUCT HAS BEEN MODIFIED OR ALTERED IN ANY WAY BY ANY PARTY OTHER THAN SYNOLOGY, OR THE FAILURE OF THE PRODUCT TO CONFORM TO ITS SPECIFICATIONS CAN BE ATTRIBUTED TO CAUSES THAT NOT THE RESPONSIBILITY OF SYNOLOGY.

SYNOLOGY MAKES NO WARRANTY OR REPRESENTATION, EXPRESSED, IMPLIED, OR STATUTORY, WITH RESPECT TO ITS PRODUCTS OR THE CONTENTS OR USE OF THIS DOCUMENTATION AND ALL ACCOMPANYING SOFTWARE, AND PARTICULARLY DISCLAIMS ITS QUALITY OR PERFORMANCE FOR ANY PARTICULAR PURPOSE.

SYNOLOGY MAKES NO GUARANTEE THAT ALL DATA STORED ON SYNOLOGY PRODUCTS IS ALWAYS SECURE WITHOUT ANY RISKS OF DATA LOSS. SYNOLOGY REMINDS YOU TO BACK UP THE DATA PERIODICALLY. UNDER NO CIRCUMSTANCES SHALL SYNOLOGY BE LIABLE IN ANY WAY TO THE USER FOR DAMAGES, INCLUDING ANY SAVINGS, LOST PROFITS OR OTHER INCIDENTAL OR CONSEQUENTIAL DAMAGES ARISING OUT OF THE USE OF, OR INABILITY TO USE SYNOLOGY PRODUCTS OR RESULTING LOSS OF DATA FROM SUCH USE.

THIS WARRANTY GIVES YOU SPECIFIC LEGAL RIGHTS, AND YOU MAY ALSO HAVE OTHER RIGHTS WHICH VARY FROM STATE TO STATE (OR JURISDICTION TO JURISDICTION). SYNOLOGY'S RESPONSIBILITY FOR MALFUNCTIONS AND DEFECTS IN HARDWARE IS LIMITED TO REPAIR OR REPLACEMENT AS SET FOR IN THIS WARRANTY STATEMENT. FOR CUSTOMERS, EXCEPT FOR THE EXPRESS WARRANTIES CONTAINED IN THIS WARRANTY STATEMENT, SYNOLOGY DISCLAIMS ALL OTHER WARRANTIES AND CONDITIONS, EXPRESS OR IMPLIED, STATUTORY OR OTHERWISE, FOR THE PRODUCT, INCLUDING BUT NOT LIMITED

TO ANY IMPLIED WARRANTIES AND CONDITIONS OF MERCHANTABILITY AND FITNESS FOR A PARTICULAR PURPOSE. NO OTHER WARRANTIES, WHETHER EXPRESS OR IMPLIED, WILL APPLY AFTER THE LIMITED WARRANTY PERIOD HAS EXPIRED. SOME STATES OR JURISDICTIONS DO NOT ALLOW THE EXCLUSION OF CERTAIN IMPLIED WARRANTIES OR CONDITIONS, OR LIMITATIONS ON HOW LONG AN IMPLIED WARRANTY OR CONDITION LASTS, SO THIS LIMITATION MAY NOT APPLY TO YOU. THIS LIMITED WARRANTY COVERAGE TERMINATES IF YOU SELL OR OTHERWISE TRANSFER THIS PRODUCT TO ANOTHER PARTY.

SYNOLOGY DOES NOT ACCEPT LIABILITY BEYOND THE REMEDIES PROVIDED FOR IN THIS LIMITED WARRANTY OR FOR SPECIAL, INDIRECT, CONSEQUENTIAL OR INCIDENTAL DAMAGES, INCLUDING, WITHOUT LIMITATION, ANY LIABILITY FOR THIRD-PARTY CLAIMS AGAINST YOU FOR DAMAGES, FOR PRODUCTS NOT BEING AVAILABLE FOR USE, OR FOR LOST DATA OR LOST SOFTWARE. SYNOLOGY'S LIABILITY SHALL NOT EXCEED THE AMOUNT YOU PAID FOR THE PRODUCT THAT IS THE SUBJECT OF A CLAIM. THIS IS THE MAXIMUM AMOUNT FOR WHICH SYNOLOGY IS RESPONSIBLE.

SYNOLOGY INC. PRODUCTS ARE NOT INTENDED FOR USE IN MEDICAL, LIFE SAVING, OR LIFE SUSTAINING APPLICATIONS.

## **DISPUTE RESOLUTION**

For the purposes of this provision, the term "Dispute" means any dispute, controversy, or claim arising out of or relating to (i) this Agreement, its interpretation, or the breach, termination, applicability or validity thereof, (ii) the related order for, purchase, delivery, receipt or use of any product or service from Synology, or (iii) any other dispute arising out of or relating to the relationship between You and Synology; the term "Synology" means Synology, Inc, its parents, subsidiaries, affiliates, directors, officers, employees, beneficiaries, agents, assigns, component suppliers (both hardware and software), and/or any third party who provides products or services purchased from or distributed by Synology; and the term "You" means the owner or purchaser of the Synology product, or those in privity with you, such as family members or beneficiaries. For US customers, you and Synology agree that any Dispute between You and Synology will be resolved exclusively and finally by arbitration under the current commercial rules of the American Arbitration Association, except as otherwise provided below. The arbitration will be conducted before a single arbitrator, and will be limited solely to the dispute between You and Synology. The arbitration, or any portion of it, will not be consolidated with any other arbitration and will not be conducted on a class-wide or class action basis. The arbitration shall be held in King County, Washington State, United States of America by submission of documents, by telephone, online or in person as determined by the arbitrator at the request of the parties. The prevailing party in any U.S. or non-U.S. arbitration or other legal action shall receive all costs and reasonable attorneys' fees, including any arbitration fee paid by the prevailing party. Any decision rendered in such arbitration proceedings will be final and binding on the parties, and judgment may be entered thereon in any court of competent jurisdiction. You understand that, in the absence of this provision, You would have had a right to litigate Disputes through a court, including the right to litigate claims on a class-wide or class-action basis, and that You have expressly and knowingly waived those rights and agreed to resolve any disputes through binding arbitration in accordance with the provisions of this paragraph. For non-US customers, any Dispute shall be finally resolved by arbitration conducted by three neutral arbitrators in accordance with the procedures of the R.O.C. Arbitration Law and related enforcement rules. The arbitration shall take place in Taipei, Taiwan, R.O.C., and the arbitration proceedings shall be conducted in English or, if both parties so agree, in Mandarin Chinese. The arbitration award shall be final and binding on the parties and may be enforced in any court having jurisdiction.

## **REVISIONS**

Synology reserves all rights to revise or update its Products, other products, software, or related documentation without further notice.

Synology Inc. reserves the right to revise this publication and to make changes in the content hereof without the obligation to notify any person of such revision or changes.