

SMCFS2601

EZ Switch™ 10/100 Mbps 26-Port Unmanaged Fast Ethernet Switch

Product Overview

The EZ Switch 10/100 SMCFS2601 is an unmanaged, rack-mountable 24-port Fast Ethernet switch with two Gigabit uplink ports. All 10BASE-T/100BASE-TX ports deliver dedicated 10/100 Mbps links to each attached LAN segment. Auto-negotiation is used to select the optimal communication mode for each connection, auto-sensing selects the optimal transmission speed. With store-and-forward switching and flow control, maximum data integrity is always maintained, even under heavy loading. Environmentally friendly, the switch consumes less power than non-green switches without reducing network performance. Easy installation and reliability make this plug-and-play switch an ideal choice for smooth Fast Ethernet integration in workgroup and small office network environments.



Key Features and Benefits

Performance and Scalability

This switch provides 8.8 Gbps wire-speed switching performance across all 26 ports. This enables the switch to fully support existing high-performance PCs and laptops, which significantly improves application response times and the speed of large file transfers.

Support IEEE 802.1p Quality of Service

When the switch receives a frame tagged with an 802.1p priority tag, it is placed in the appropriate priority queue. Priority queuing is useful in environments where time-sensitive data, such as voice and video, are streamed across the network.

Green Ethernet Support

The switch power consumption is much less than non-green switches and can be as low as 15.1 W.

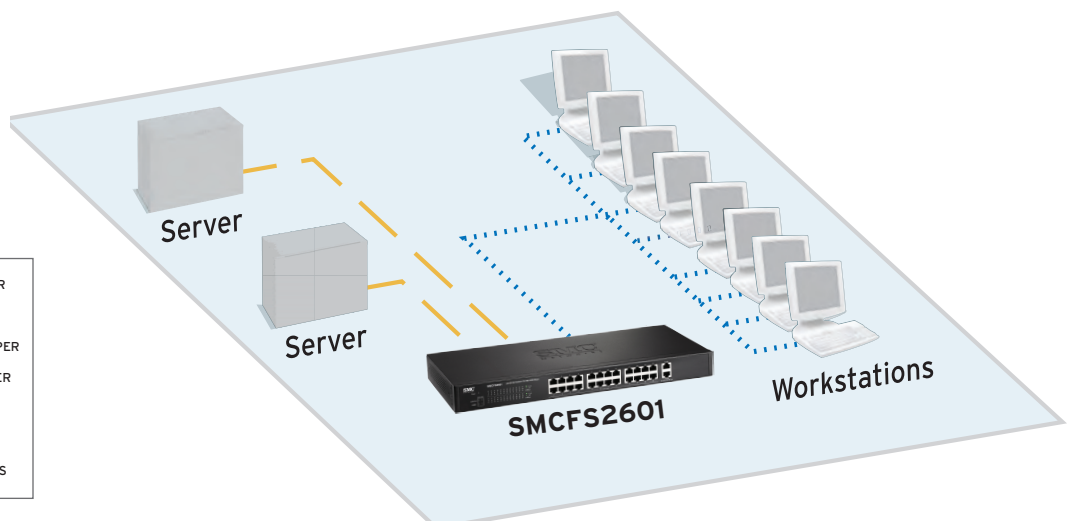
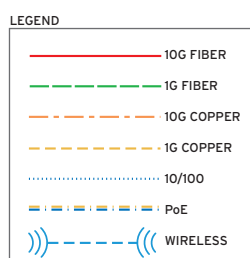
Auto MDI/MDI-X on Each Port

Support for Auto MDI/MDIX means that no crossover cables are required. Straight-through cables can be used for all connections.

Metal Chassis Fan-less Design

The compact, rack mountable metal chassis is ideal for desktop or rack mounting. In addition, the lack of fans provides silent operation.

Application Diagram



Features

PHYSICAL PORTS

SMCFS2601:

- 24 x 10/100 Mbps Auto-Negotiation RJ-45 ports
- 2 x 10/100/1000 Mbps Auto-Negotiation RJ-45 ports

NETWORK INTERFACE

- 10BASE-T (IEEE 802.3)
- 100BASE-TX (IEEE 802.3u)
- 1000BASE-T (IEEE 802.3ab)

FEATURE

- IEEE 802.1p QoS
- IEEE 802.3x Flow Control
- Auto-MDI/MDIX
- Green Saving

LEDs

- Power
- Link/Activity
- 100 Mbps / 1000 Mbps

SWITCHING DATABASE

- 8K MAC address entries

BUFFER MEMORY

- 2.5 Mbytes/device

SWITCHING CAPACITY

- 8.8 Gbps

POWER REQUIREMENT

- 100-240V~50/60Hz, 0.6A

FRAME FILTER RATE

- 10BASE-T: 14880 pps/port
- 100BASE-TX: 148800 pps/port
- 1000BASE-T: 1488000 pps/port

FRAME FORWARDING RATE

- 10BASE-T: 14880 pps/port
- 100BASE-TX: 148800 pps/port
- 1000BASE-T: 1488000 pps/port

THROUGHPUT

- 6.5 Mpps

DIMENSIONS

- 44 x 18.0 x 4.4 cm (17.4 x 7.11 x 1.73 in)

WEIGHT

- 2.4 Kg (5.28 lbs)

ELECTROMAGNETIC COMPATIBILITY

- CE Mark
- FCC Class A
- KCC

IMMUNITY

- EN55024
- IEC61000-4/2/3/4/5/6/8/11

EMISSIONS

- FCC Class A, EN55022/EN61000-3-2/3

SAFETY

- LVD (EN60950)

TEMPERATURE

- Operating Temperature: 0°C~40°C (32°F~104°F)
- Operating Humidity: 10%~90% non-condensing
- Storage Temperature: -40°C~70°C (-40°F~158°F)
- Storage Humidity: 5%~90% non-condensing

WARRANTY

Please check www.smc.com for the warranty terms in your country.

Contact

World Wide Corporate and Sales Headquarters

No. 1 Creation Road III,
Hsinchu Science Park,
30077, Taiwan, R.O.C.

Tel: +886 3 5770270 Fax: +886 3 5780764

Singapore

1 Coleman Street
#07-09, The Adelphi
Singapore 179803

Tel: 65-63387667 Fax: 65-63387767

Check www.smc-asia.com for your local country contact information

Europe/Africa

C/Fructuós Gelabert 6-8 2º, 2ª,

Edificio Conata II,
08970 Sant Joan Despí

Barcelona - Spain

Phone: +34 93 477 4920

Check www.smc.com for your local country contact information

©2011 SMC Networks. EZ Switch™ is a trademark of SMC Networks. Other trademarks or registered trademarks are the property of their respective owners. Information is subject to change without notice. All rights reserved.