

IAS-2000 v2

Internet Access Gateway

The IAS-2000 v2 is a Network Access Control System specially designed for simple small and middle- scaled wireless network environments while retaining network efficiency. IAS-2000 v2 delivers manageability and friendly interface for campuses, small and middle enterprises, factories, Hotspots and community hospitals.

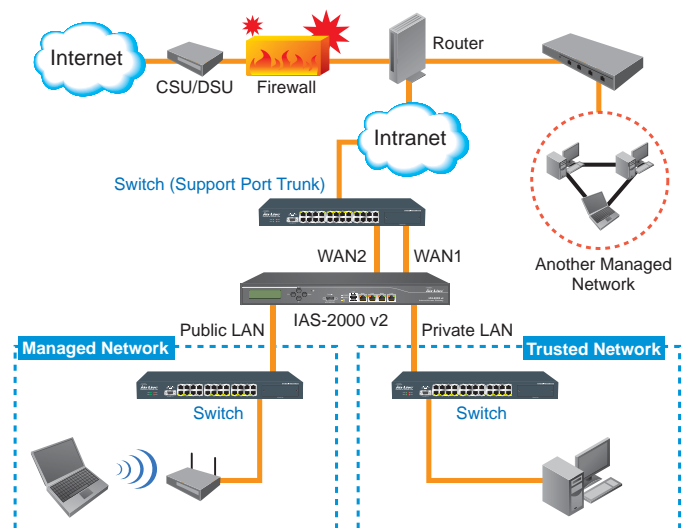
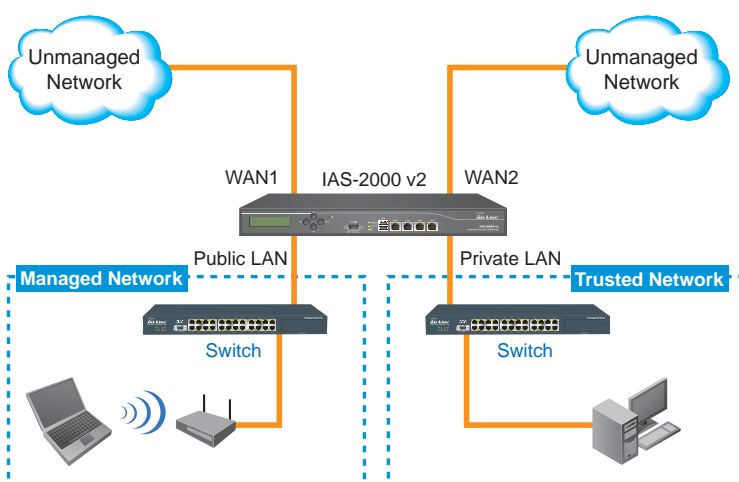


Get Online Immediately

The installation and setup of IAS-2000 v2 can be easily done without changing the existing network architecture. The system can be installed and logged within a short amount of time to establish the security mechanism. With the protection by IAS-2000 v2, users must be authenticated before logging into the network, and the administrator can assign a fine-grained priority to each user stratifying the scope and right of using network resources.

Integrating the Existing User Password Database

In general, most organizations use specific database system to centralize and manage user Passwords before introducing the wireless network into the organization. IAS-2000 v2 supports Local, POP3(+SSL), RADIUS and LDAP external Public LAN mechanisms, and allows Integration of the current user password database. This system also provides a built-in user Database, so that the administrator can create or upload the Public LAN data by a batch process.



Manufacturer

OvisLink Corp.

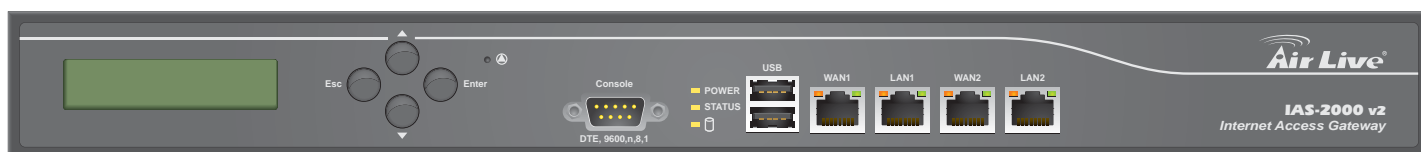
5F, No.96, Min-Chuan Rd, Hsin-tien City, Taipei, Taiwan

www.airlive.com

Integrating user's authorized data into Micros Fidelio PMS form

The system integrates a hotel in-door billing system, PMS, developed by Micros Fidelio, and it is usually used in the hotel environment. When the customers need to access Internet in the hotel, they have to get printed receipts with usernames and passwords from the hotel to log in the system.

IAS-2000 v2 offers a simple PMS form, so the system integrator can capture the user's data from the form, and combine the data into PMS system.



LCD Display and DB9 serial port for Console and Ticket Printer

Built-in with LCD display, user can easily check system and interface information without computer; the DB9 serial port is not just for system console, it can also connect to the ticket printer TP-1000S, so the service owner can print out the authorized data on the ticket and give the ticket to user.

Suitable for large Hotspot Environment

With powerful hardware specification, IAS-2000 v2 can support large Hotspot environment such as campus or Enterprise Company. Following is the environment comparison of AirLive Hotspot products:

Model	IAS-2000 v2	MW-2000S	WIAS-1200G
Max. Concurrent Users	400	120	50
Max. Creative Users	Local: 2500 On-Demand: 2000	Local: 250 On-Demand: 2000	Local: 500 On-Demand: 2000

Specifications

Hardware specifications

- CPU: Intel(R) Celeron(R) CPU 1.20GHz
- Memory: 128 MB
- Interface
 - WAN: 2 x 10/100/1000 Base-T
 - LAN: 2 x 10/100/1000 Base-T
- Console: DB9 serial port (9600,n,8,1, and no flow control)
- Mounting: 19" 1U rack mount
- Dimension: 42.6 x 4.5 x 27 cm
- Weight: 3.3kg
- Operating Temperature: 0 ~ 40 °C
- Storage Temperature: -20 ~ 70 °C
- Power: 100 ~ 240 VAC 50/60Hz

Hotspot User Authentication

- Local User Authentication
- POP3 User Authentication
 - POP3 Server Authentication: Support SSL (POP3s)
- LDAP Server Authentication
 - Server IP, Port Number, Base DN
- MS NT Domain Server Authentication
 - Transparent login
- RADIUS Authentication
 - PAP / CHAP
- On-demand User for Instant Account
- PMS user (Property Management System)

Hotspot Specification

- Billing system (On-demand User only)
 - Billing Plan: Up to 10
 - Billing Method: Time (hour) or Network Usage (MB)
 - Credit Redemption: Customers add credit to account prior expiration
- Policy Configuration
 - Firewall
 - Specific Route
 - Login Schedule
 - Bandwidth Control
 - User Session Limit
- Blacklist
- Guest User
- Multiple Login on Single Account (exclude on-demand and RADIUS)
- Session Idle timeout
- Customized Login / Logout page

Networking

- Operation Mode: Route, NAT
- WAN1 connection method: Static IP, DHCP, PPPoE
- WAN2 connection method: Static IP, DHCP, 802.3ad (appear when WAN1 is Static IP)
- WAN Failover
- 802.1q VLAN: 32 sets
- DHCP Server and relay
- HTTP Proxy Server: 20 sets
- DMZ Server Mapping: 40 sets
- Virtual Server Mapping: 40 sets
- Port and IP Redirection
- Privilege IP / MAC: 100 / 40 sets
- DDNS
- IP PnP (IP Plug and Play)
- IP Mobility: Maintain connectivity across different IP segments User Management

Performance

- Maximum concurrent users: 400
- Maximum user database
 - Local user database: 2500
 - On-demand user: 2000
- Maximum throughput: 400 Mbps

Security Functions

- Firewall
 - 20 sets of firewall profiles with 10 rules
- Walled Garden
 - 20 URL / Domain / Network Segments
- Permitted MAC Address : 40 sets
- DoS Protection
- User SSL web Login
- Secured Shell (SSH) Host
- VPN pass-through
 - IPSec and PPTP

Reporting / Monitoring

- Monitor IP List: 40 sets
- Traffic History Log
 - Traffic, On-demand User, PMS User, Roaming Out Traffic, Roaming In Traffic, Interface Performance, Internal Service, System Performance, Monthly Report
- Log Notification
 - Email, Syslog, FTP

System Administration

- Synchronize system time via External NTP server
- SNMP v2, v3 read-only
- SSH remote management
- Firmware upgrade via Web UI
- Export log to external syslog server

Certification and Approval

- CE
- FCC

Ordering Information:

IAS-2000 v2 Internet Access Gateway