

CW-720IR

720P Day/Night Wireless IPCAM

- Easy Plug-n-Play Installation
- H.264 and MJPEG Encoder
- 30fps at 1280x1024 / 1280x720
- IR LED for Day/Night Surveillance
- WDR, LDC, De-Fog Function
- Two-Way Audio
- Motion, Audio and Tempering Detection
- OnVIF Supported
- Multiple Event Actions



Are you still looking for day/night surveillance for children or elder families at home? AirLive CW-720IR is a plug-n play, easy to install tiny cube camera which is the best security guard for home solution.

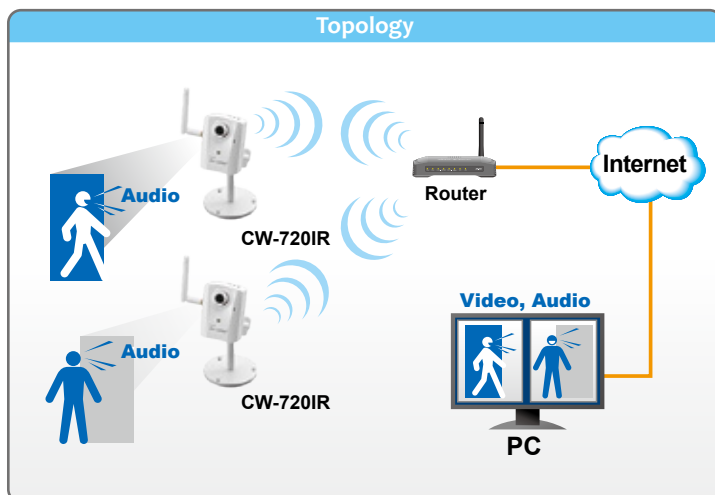
1.3M Resolution and Quality Enhancement

The CW-720IR is a 1.3 Megapixel IPCAM and equipped with IR LED for day/night surveillance. It is also with the WDR, LDC (Lens Distortion Correction) and De-fog features to ensure the image quality all the time. Moreover, it is equipped with H.264/MJPEG multiple streams and two-way audio function to enhance your security.



Easy to Install

The CW-720IR can be easily connected wirelessly, which saves time and unnecessary cabling during installation. The intelligent IP Installer utility for searching CW-720IR in the network can speed up the installation with only few clicks on the computer.

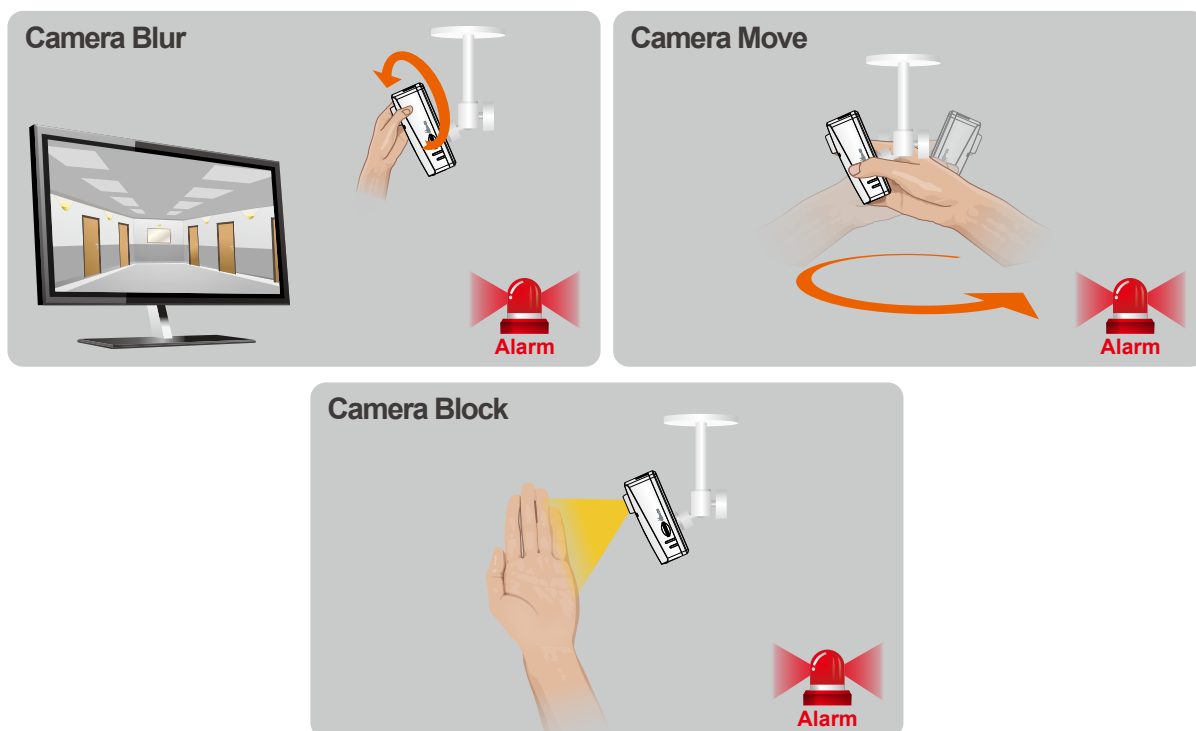


H.264 and Motion JPEG Compression Formats

The CW-720IR is a wireless IP camera with H.264 and Motion JPEG capabilities. Multi-Output streams allows for good compression performance with low bit rates and bandwidth requirements.

Camera Tempering Detection

The tempering detection is to prevent if the camera has been covered or changed the angle of the view. Then, the camera will send alert to you immediately.





**64GB
MicroSD**

Up to 64GB MicroSD Local Storage or Remote Save Path

MicroSD becomes more popular for local storage in IP cameras. Once you setup the camera and MicroSD card correctly, you may easily save the video to MicroSD local storage or to the remote via network.

Multiple Event Actions

The CW-720IR is able to send alarm to NAS, FTP, Email, Voice alert, MicroSD and HTTP/TCP servers from motion detection, audio detection, tempering detection and network disconnected.



CamPro Mobile for iOS and Android

The CW-720IR can be connected by your iPhone/iPad and Android devices via AirLive CamPro Mobile app, so you may easily access CW-720IR at anywhere and whenever you have internet access for live viewing and even playback the video on your mobile devices.

Optional Stand for Cube Cameras

The ACC-WMK-CU01 is an optional stand for CU-720IR and CW-720IR cube type cameras. You may choose this new shape for your indoor environment.

ACC-WMK-CU01



Specifications

Camera

Camera Type

- Cube Type

Image Sensor

- 1/4" CMOS Sensor

Max. Resolution

- 1280x1024 / 1280x720

Lens Type

- 3.6mm

Night Vision

- 1pc IR LED

IR Distance (Max.)

- 5M

Minimum Illumination

- Color: 0.5 Lux
- B/W: 0 Lux (IR On)

Angle of View (Diagonal)

- 63°

Video

Video Compression

- H.264 Main/Baseline Profile and MJPEG

Video Mode

- 1.3M Mode (4:3) / 720P Mode (16:9)

Resolution and Frame Rate

- 30fps@1280x1024
- 30fps@1280x720
- 30fps@640x480
- 30fps@640x360
- 30fps@320x240
- 30fps@160x120
- 30fps@160x80

Streaming

- Multi-profile Streaming
- Streaming over UDP, TCP, HTTP or HTTPs
- MJPEG streaming over HTTP (Server Push)
- Configurable frame rate and bandwidth
- Support CBR and VBR

Image Setting

- AE, AWB

Manufacturer

OvisLink Corp.

5F, No.96, Min-Chuan Rd., Hsin-Tien Dist., New Taipei City 231, TAIWAN

www.airlive.com

- 3D Noise Reduction
- Exposure Value / Color Level / Brightness / Sharpness / Contrast
- De-Fog
- Lens Distortion Correction (LDC)
- Mirror / Flip / Rotation
- Auto-false Color
- Privacy Mask
- Text, Time and Date OSD

ROI

- 2 Windows, free scale Region of Interest

Digital Zoom

- Yes

Network

Ethernet

- 10/100M Auto Negotiation

Network

- 802.11n WLAN

Protocols

- IPv6, IPv4, TCP, UDP, HTTP, HTTPS, SMTP, FTP, NTP, DNS, DDNS, DHCP, DIPS, ARP, Bonjour, UPnP, RTSP, RTP, RTCP, IGMP, PPPoE, 3GPP, Samba, ICMP, QoS

Users

- 8 Simultaneous Unicast Users

NAT Transversal

- UPnP NAT Transversal

Security

- Password Protection
- IP Address Filtering
- HTTPS Encrypted Data Transmission
- User Access Log

Audio

Audio Encoder

- G.711 64kbps, G.726 32kbps

Audio Streaming

- Two-Way

Audio Input / Output

- Built-in MIC / Line Out

LED Indicator

Power LED

- Amber Color

Link/Act. LED

- Green Color

General

Power Supply

- DC12V/1A

Connector

- RJ-45 10BaseT/100BaseTX
- 12V DC Power Jack
- 3.5mm Audio Output
- MicroSD Card Slot up to 64GB
- Reset Button

Environment

- Operation Temp: 0°C ~ 40°C
- Humidity: 20% ~ 80% non-condensing
- Storage Temp: -20°C ~ 50°C
- Humidity: 20% ~ 80% non-condensing

SD card slot

- 64G MicroSD/SDHC

System Integration

Software

- CamPro Express 64, CamPro Professional
- Search & Installation- IP Wizard II

Event Triggers

- Motion Detection
- Camera Tampering
- Audio Detection
- Network Disconnect

Motion Detection

- Up to 10 zones

Application Programming Interface

- OnVIF
- Open API for Software Integration
- SDK

Video Buffer

- Pre / Post-alarm, up to 3MB

Alarm Events

- File upload via FTP, NAS, SAMBA Server
- Notification via email, HTTP and TCP
- Audio Alerting Output (Speaker)
- IR LEDs (Night / Day mode)
- Save to MicroSD card

Continuous Recording

- Continue Recording to SD / SAMBA

Certificate

- CE, FCC-Class B

Viewing System

- OS
- Windows® XP, Vista, 7, 8

Browser

- IE 8.0 or later, Firefox, Safari, Chrome

Cell Phone

- With 3GPP player

Video Player

- VLC, Quick Time, Real Player, Core Player

Ordering Information:

AirLive CW-720IR

720P Day/Night Wireless IPCAM

AirLive CW-720IR-CU01

720P Day/Night Wireless IPCAM with Optional Stand