

N2310

Best-in-Class Value

Online-installation & Automatic Update Tool

Unbeatable Performance

Built-in PLEX: All Your Media, Wherever You Are

Seamless Connectivity with **Free DDNS** & Powerful **T-OnTheGo™** App

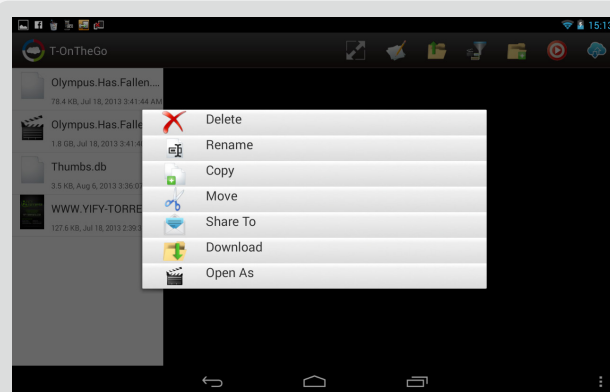


intelligent NAS



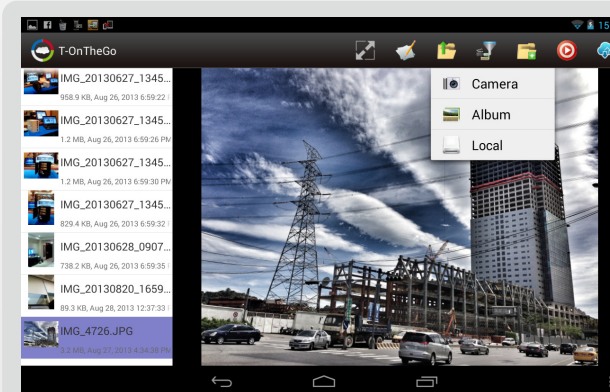
Seamless Connectivity with **Free DDNS** & Powerful **T-OnTheGo™** App

Features



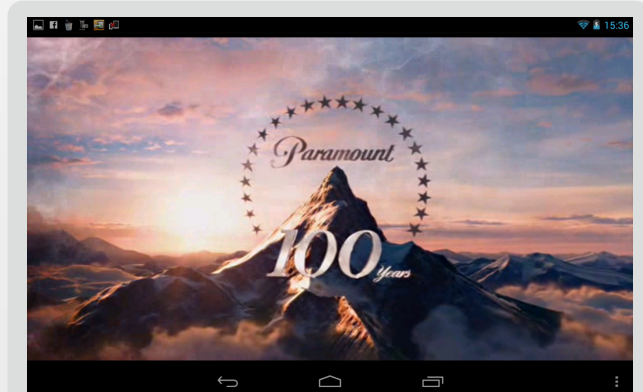
Manage Files

copy/move/rename/delete/create folder/share to/open with



Instant Photo Upload

Upload photos and videos from your camera or photo library



Video Streaming

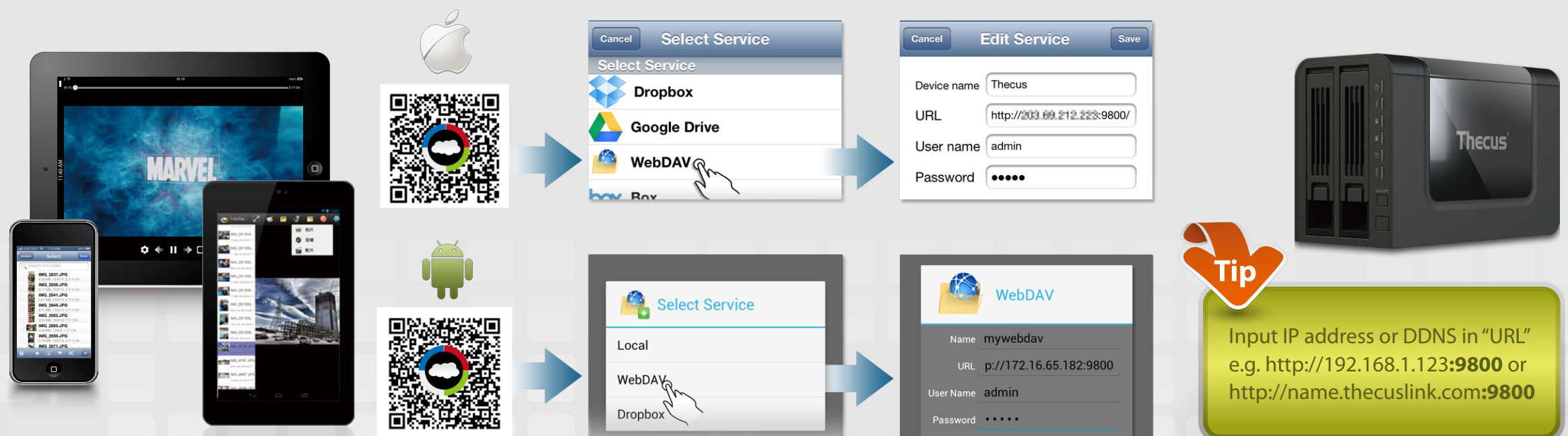
Play videos directly from your Thecus® NAS (even via AirPlay)

3 Steps

Step 1. Install App

Step 2. Setup WebDAV

Step 3. Access your NAS



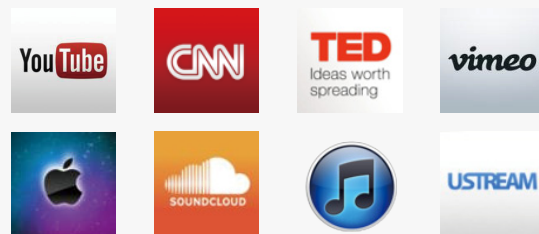


Built-in PLEX: All Your Media, Wherever You Are

Features

Effortlessly connect

to all of your favorite local and online content



All presented seamlessly on
your **handheld devices**



Extend the functionality of connected TVs and get
the most out of **DLNA** compatible devices like
the PS4 and Xbox 360

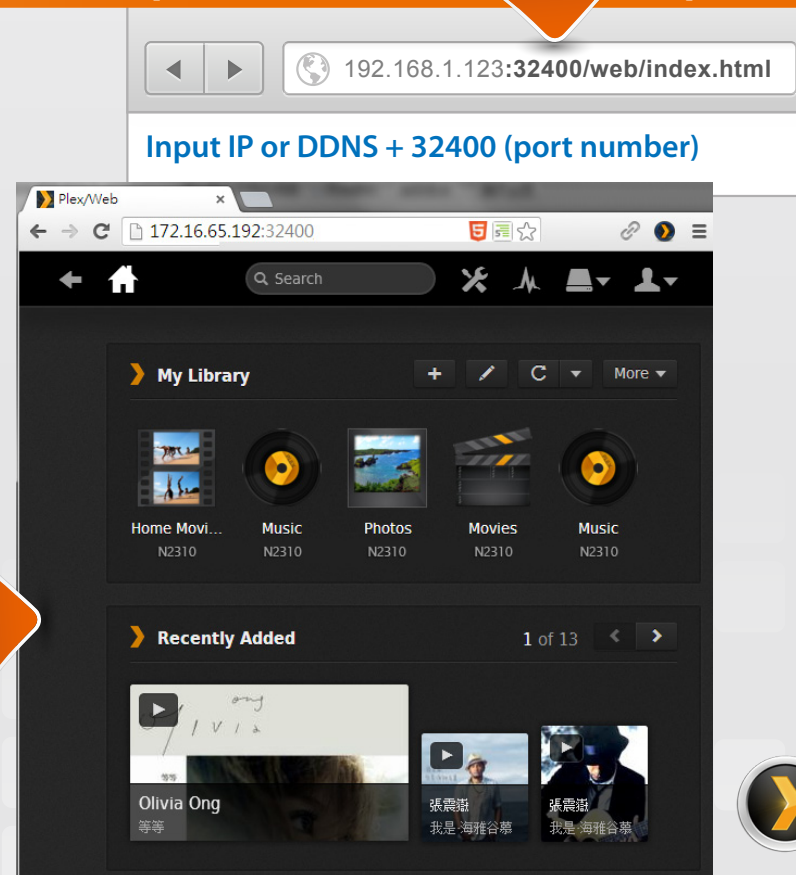


3 Steps

Step1. Install Application

Step2. Enter UI Address

Step3. Add section to library, and DMP will find it.





Transmission-kit: Easy-to-Use BitTorrent Client

Features

Bandwidth RPC
Scheduling Peers
Blocklists Peer Port
Queuing Files and Locations

Lightweight but Powerful

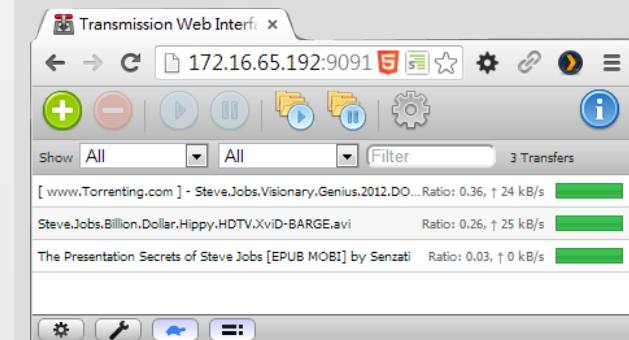
Provides a whole host of clever features and flexible settings, especially when it comes to managing your bandwidth.

"Remote Transmission"

With this free third-party app for Android, you can easily take control of your NAS Transmission server with your mobile device.

Easy-to-use

All live download stats are viewable directly in the dock.

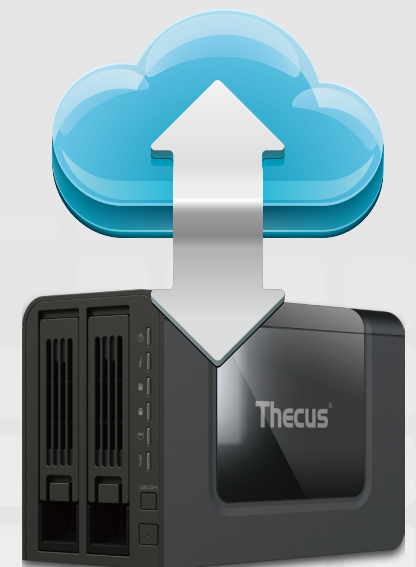
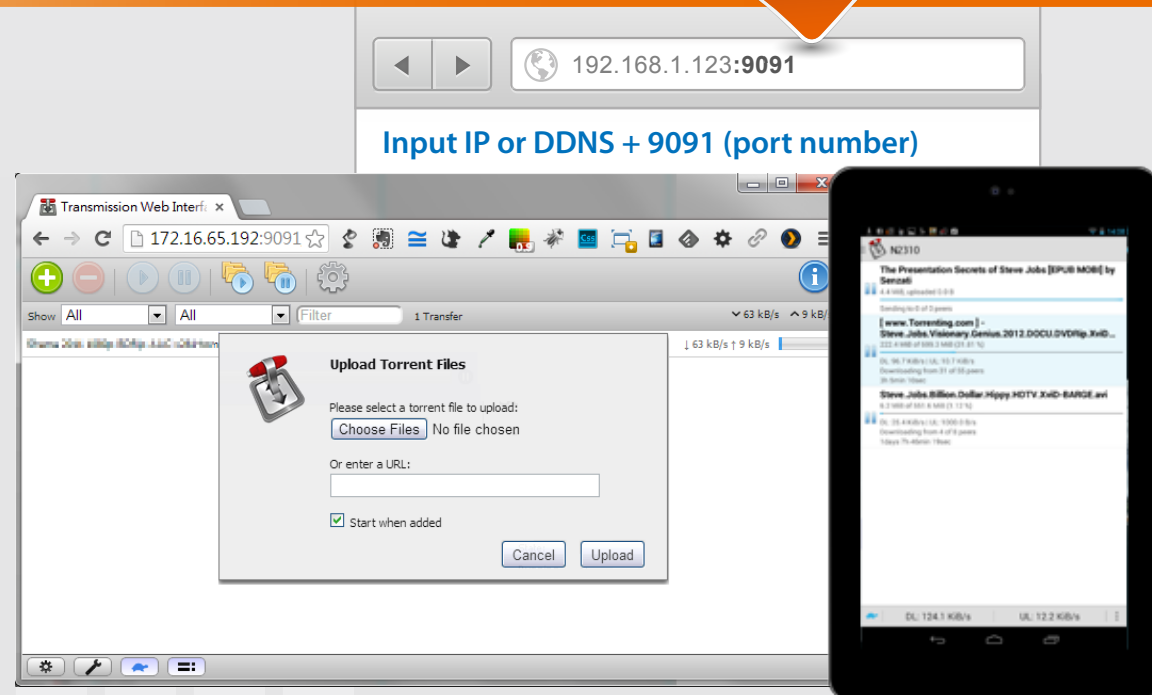


3 Steps

Step1. Find torrent files on the internet **Step2.** Enter NAS IP:9091 **Step3.** Upload torrent files



bitsnoop.com
torrentcrazy.com





24/7/365

Performance, Energy Efficiency & Your Budget

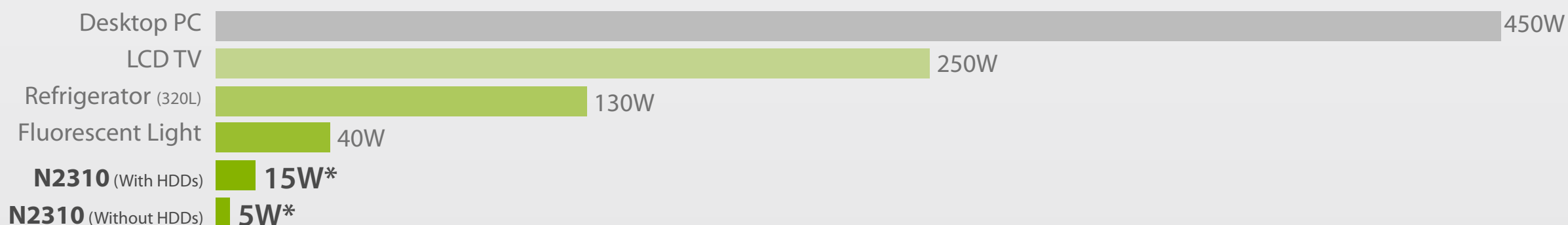
N2310 (2xHDD RAID 0) Samba Performance



Client-side System Configuration

CPU: Intel Core i5
Memory: 4GB DDR2
OS Platform: Windows 7

Electrical Appliance Power Comparison



An N2310's Electricity Fee per Year

	Cost/kWh***	Without HDDs	With HDDs
Australia	0.23 AUD	9.98 AUD	29.93 AUD
Germany	0.25 EUR	10.86 EUR	32.57 EUR
The Netherlands	0.21 EUR	9.19 EUR	27.56 EUR
England	0.12 GBP	5.41 GBP	16.23 GBP
Japan	19.51 JPY	854.45 JPY	2,563.36 JPY
Mainland China	0.46 CNY	20.10 CNY	60.31 CNY
U.S.A	0.08 USD	3.50 USD	10.51 USD
Taiwan	3.00 TWD	131.40 TWD	394.20 TWD

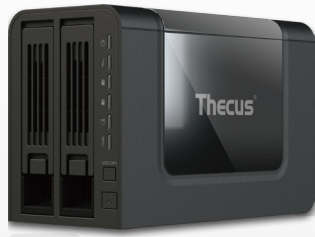
Without HDDs: $5W \times 24\text{hours}/1000 = 0.12 \text{ Units}^{**}$
With HDDs: $15W \times 24\text{hours}/1000 = 0.36 \text{ Units}^{**}$

* Results may vary depending on number and type of drives used.

** Units of electricity consumption = (Watts x Hours)/1000

*** Source: http://en.wikipedia.org/wiki/Electricity_pricing#Global_electricity_price_comparison
Prices accurate as of October 2013.





N2310 Specifications

Hardware Platform

Processor

- AMCC APM 86491 800Mhz

System Memory

- 512MB DDR3

LAN Interface (PCI-e)

- RJ-45x1: 10/100/1000 BASE-TX Auto MDI/MDI-X

USB Interface

- USB 2.0 host port x1 (back x1)
- USB 3.0 host port x1 (back x1)

Disk Interface

- 2 x SATA for internal

Power Supply

- 40W external power adaptor

Buttons

- Power button
- USB copy button
- Reset button

Environment

- Temperature: 5°C to 40°C
- Humidity: 0 ~ 80 % R.H. (Non-condensing)

Chassis

- 2-bay Tower

Dimensions (HxWxD)

- 135 x 97 x 207 (mm)

Weight

- 0.79 kg

Certificates

- CE/FCC/C-Tick/VCCI/BSMI
- RoHS
- WEEE

Software Functions

RAID

- RAID Modes: RAID 0, 1 and JBOD
- Auto-rebuild: Supported
- Hot-swap: Supported

Disk

- Bad Block Scanning: Supported
- SMART Info: Supported
- SMART Test: Supported
- Disk Roaming: Supports volume-based roaming to other N2310

Network

- Configuration: Fixed IP address, dynamic IP address
- Transport Protocols: TCP/IP, AppleTalk
- File Protocols: SMB/CIFS, HTTP/HTTPS, FTP, AFP
- TCP/IP: IPV6 & IPV4

System Status

- Syslog Management:
 1. Send syslog to assigned location
 2. Act as syslog server to receive log info from other systems

Data Access

- Client OS Support :
 - Windows XP and above
 - Windows Server 2003 and above
 - Mac OS X
 - Linux
- FTP: Built-in FTP server with bandwidth control
- Secure FTP: Built-in secure FTP server with bandwidth control
- Download Manager: BT Transmission
- Printer Server (IPP):
 1. Supports USB printers
 2. Supports a wide range of IPP printers
 3. Client can manage print tasks (list/delete) via web user interface

Data Backup

- Client Incremental Data Backup: Thecus Backup Utility
- Data Burn:
 1. Create files to ISO image and burn to optical disc
 2. Create files to ISO image
 3. Read ISO image from optical disc and write to NAS
- Mac OS X Time Machine: Supported
- Data Guard: Remote Backup/Local Backup

Power Management

- Scheduled Power On/Off: Supported

Volume Management

- File System: EXT4

Multimedia Support

- iTunes Server: Supports AAC, MP3 w/ID3 tag and WAV
- Piczza!™ Photo Server (via module):
 1. Supports GIF, JPG (JPEG), BMP, PNG
 2. Supports EXIF display
 3. Supports slide show
- Media Server: Supports uPnP AV streaming protocol

User Authentication

- Local User: Supports built-in user accounts
- Local Group: Supports built-in user groups

File System

- Type: Journaling File System
- Language Support: Unicode Support
- Authorization (ACL): "Read", "write", or "deny" privileges to individual users or groups in folders and sub-folders
- User Quota: Supported

Administration

- User Interface: Web-based user interface supports English, Traditional Chinese, Simplified Chinese, Japanese, Korean, French, German, Italian, Spanish, Russian, Polish, Portuguese, Turkish and Czech

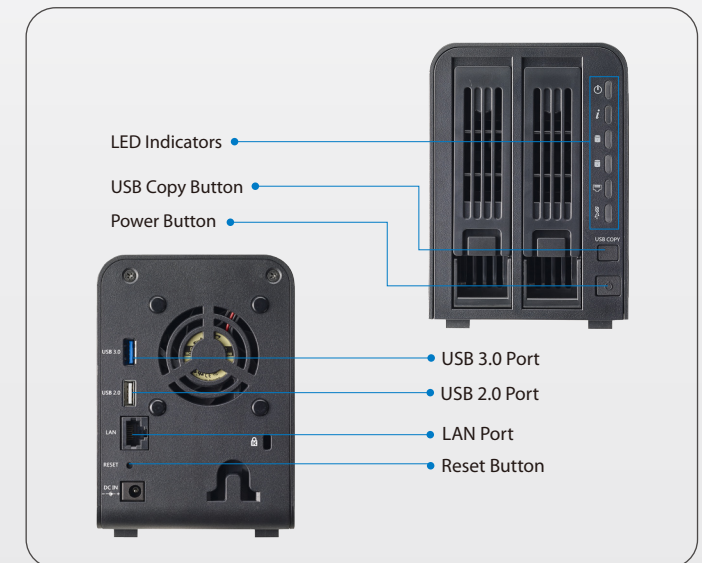
- Utility Program (Intelligent NAS):
 - MS Windows Setup Wizard
 - Supports Windows XP and above
 - Windows Server 2003 and above
 - Mac OS X Setup Wizard
- Email Notifications: Sends system messages via email to the system administrator
- DDNS: Supports one free DDNS registration (e.g. xxx.thecuslink.com)
- UPnP and Port forwarding: Supports auto setting in Intranet environment
- Intelligent NAS: Go through defined URL for auto install (install.thecus.com)

Mobile Applications (iOS/Android)

- T-Dashboard™: Mobile monitoring and administration
- T-OnTheGo™: Upload, download and stream multimedia

Others

- Recycling Bin: Supported
- Web Disk: Supported



Thecus® HQ

15F., No.79, Sec.1, Sintai 5th Rd., Sijhih Dist, New Taipei City 221, Taiwan
Email: sales@thecus.com



Thecus® U.S.A., Inc.

487 Montague Expressway, Milpitas, CA 95035, USA
Email: support@us.thecus.com
Tech support: ussupport.thecus.com/esupport

Thecus® NL B.V.

Marinus Dammeweg 7, 5928 PW Venlo, the Netherlands
Email: thecus_nl@thecus.com
Tech support: esupport.thecus-eu.com
Support e-mail: support_nl@thecus.com

Thecus® China

13th Floor Room G, Investment Building, Zhongshan South Road
No. 414, Qinhuai District, Nanjing City, China
Support e-mail: support_cn@thecus.com

Thecus® Germany

Siemensstr. 17, 76275 Ettlingen
Email: support@thecus-service.de
Tech support: esupport.thecus-eu.com

Thecus® France

11 avenue de Norvège, ZAC de Courtaboeuf,
91140 Villebon sur Yvette, FRANCE
Tech support: esupport.thecus-eu.com

Official Website: www.thecus.com

Reseller Center: www.thecus.com/reseller_index.php

*Design and specifications are subject to change without prior notice.