

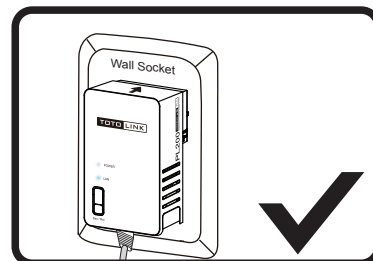
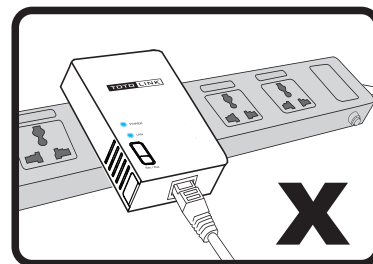
TOTO LINK

Quick Installation Guide

PL200 Mini Powerline Adapter

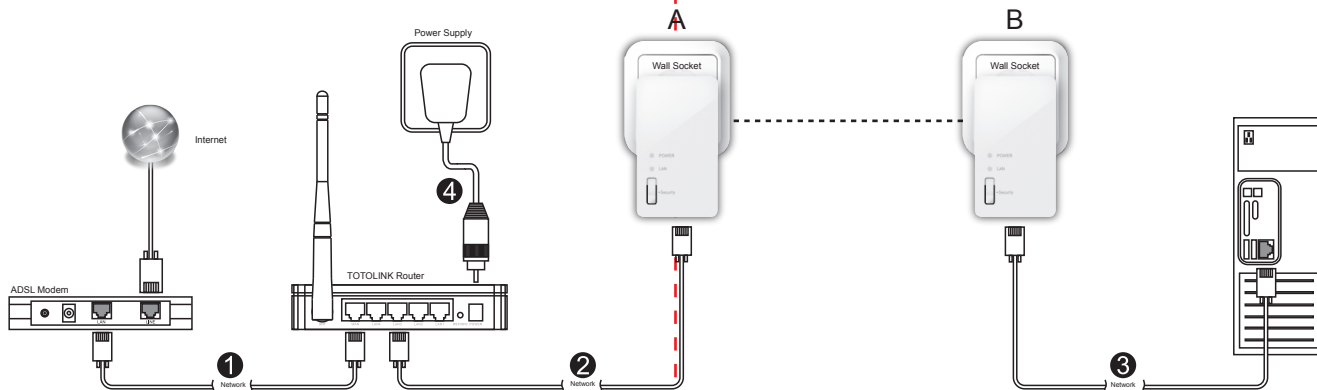
Copyrights 2013 by TOTOLINK All rights reserved. Website: <http://www.totolink.net>
Information in this document is subject to change without prior notice.

1 Before Installation



To ensure the optimum performance of the Powerline Adapter and significantly improve the transmission capacity of the network, we recommend that you plug the Powerline Adapter directly into a wall socket but not the multiple sockets.

2 Powerline Network Installation



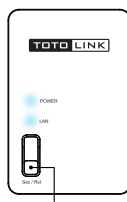
3 Powerline Network Installation

1 LED Indicators

LED Indicator	Status	Indication
POWER LED	On	The adapter is switched on.
	Blink	The pair function is working or in power-saving mode.
	Off	The adapter is powered off
LAN LED	On	The Ethernet port is connected, but no data transferring
	Blink	The Ethernet port is transferring data
	Off	The Ethernet port isn't connected

2 Button Description

By default, PL200s can connect to each other when they're powered on. But you can also use Sec/Rst button to recreate a secure powerline network. Please follow below instructions (we consider the two PL200s are A and B):



1. Press and hold the Sec/Rst button of Powerline adapter A for 2-3 seconds. The POWER indicator starts blinking.
2. Press and hold the Sec/Rst button of Powerline adapter B for 2-3 seconds. The POWER indicator starts blinking. (This procedure must be done within 130 seconds after the Powerline adapter A powered on.)
3. Wait for about 3 seconds while the PL200s are connecting. After that, POWER indicator keeps solid light.
4. If you press and hold the Sec/Rst button for about 16 seconds, PL200 will be reset to default factory settings. The POWER indicator starts blinking, then both the POWER and LAN indicator off and they resume to solid light at last.

4 Power-Saving Mode

1 Enter Power-Saving Mode

After connected with PC, this adapter will keep working. If you need it to "rest" without pulling it out from the wall socket, please press Sec/Rst button, the POWER LED indicator will blink for 4s off and 1s on. It means the adapter has been in the power-saving mode.

2 Quit Power-Saving Mode

Press Sec/Rst button for about 4s until the POWER LED lights, the adapter quit power-saving mode.

5 Generate New Password

By default, all PL200s have the same password and can connect to each other after powered on. But if there are more than three PL200s in your network and you want to prevent others from joining your PL200s group, the best solution is to change the password.

Operation: Press Sec/Rst button of Adapter A for 8s-12s, the password will change automatically. Other PL200 have to re-pair with Adapter A for new network connection. (How to pair please refer to Button Description.)

NOTE:

For more than three PL200s group, if two or more adapters have changed the password, other adapters only need to re-pair with any one of them to join.