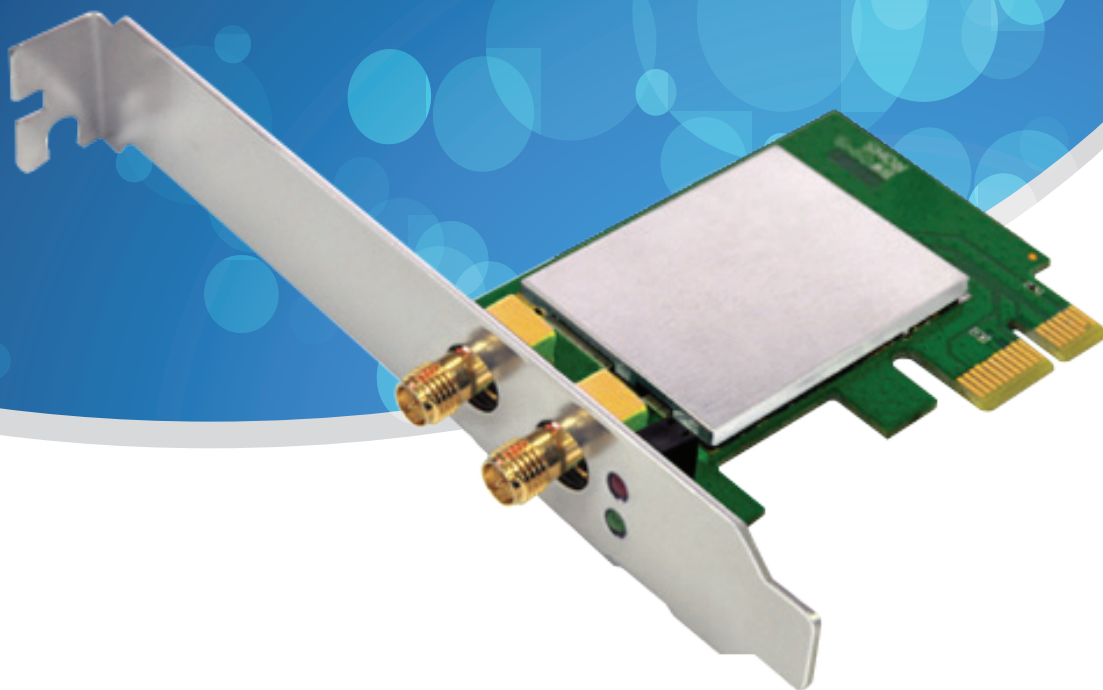


300Mbps Wireless N PCI-E Adapter 802.11n/b/g (2T*2R)

Model No. N300PE

N300PE is a 2*2 wireless PCI-E adapter which complies IEEE 802.11n standard and can deliver up to 300Mbps wireless data rate. It supports PCI-E slot and since it adopts two detachable high gain antennas, it is better for connecting a desktop computer to a wireless network with high speed and stability. Besides, it supports the most advanced WPA/ WPA2 encryption mode which makes wireless connection more secure. Generally, it is a perfect solution for small office and home needs.



Features

- Complies with IEEE 802.11n and IEEE 802.11g/b standards for 2.4GHz Wireless LAN.
- Up to 300Mbps high speed transmission rate.
- Advanced MIMO technology enhances the throughput and wireless coverage.
- Supports 64/128-bit WEP, WPA/WPA2, WPA-PSK/WPA2-PSK (TKIP/AES) encryption.
- Works with all existing network infrastructure.
- Provides two methods of operation: Infrastructure and Ad-Hoc.
- Supports Windows XP /Vista, Win7/ Win 8, Linux and Mac OS.
- Easy to configure and monitor.

Specifications

Hardware	
Interface	- PCI-E
Antenna	- Two detachable antennas
LED Indicators	- 1* LINK, 1* ACT
Dimensions	- 56mm x 72mm x 1.6mm (L x W x H)
Environment	- Operating Temperature: 0℃~50℃ (32°F~122°F) - Storage Temperature: -20~70℃ (-4°F~158°F) - Operating Humidity: 10%~85% non-condensing - Storage Humidity: 5%~95% non-condensing
Wireless	
Standards	- IEEE 802.11n, IEEE 802.11g, IEEE 802.11b
RF Frequency	- 2.4~2.4835GHz
Data Rate	- 802.11n: up to 300Mbps - 802.11g: up to 54Mbps (dynamic) - 802.11b: up to 11Mbps (dynamic)
Wireless Security	- 64/128-bit WEP, WPA/WPA2, WPA-PSK/WPA2-PSK (TKIP/AES)
Output Power	- 20dBm (Max.)
Modulation Type	- DBPSK, DQPSK, CCK and OFDM (BPSK, QPSK, 16-QAM/ 64-QAM)
Reception Sensitivity	- 135M: -65 dBm@10% PER - 54M: -68 dBm@10% PER - 11M: -85 dBm@8% PER - 6M: -88 dBm@10% PER - 1M: -90 dBm@8% PER